

# Anti-PGD Rabbit antibody



Catalog Number: 168815

## Product name

Anti-PGD Rabbit antibody

## Dilutions

1:1000-1:5000

## Specificity

1:50-1:200

Human, Mouse, Rat

1:20-1:100

## Antibody description

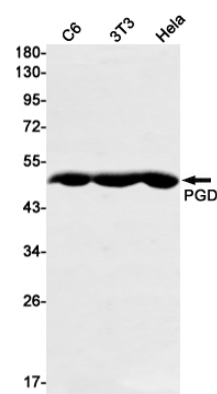
1:20-1:50

PGD Rabbit monoclonal antibody

## Preparation

Antigen: A synthetic peptide of human PGD

## Validations



## Formulation

Supplied in 50nM Tris-Glycine(pH 7.4), 0.15M NaCl, 40%Glycerol, 0.01% sodium azide and 0.05% BSA.

Western blot detection of PGD in C6,3T3,HeLa cell lysates using PGD Rabbit mAb(1:1000 diluted).Predicted band size:53kDa.Observed band size:49kDa.

## Storage

Store at 4°C short term. Aliquot and store at -20°C long term. Avoid freeze / thaw cycle.

## Clonality

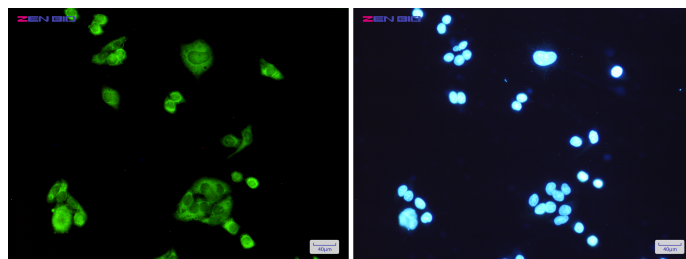
Monoclonal

## Ig Type

Rabbit IgG

## Applications

WB, ICC/IF, FC, IP



Immunocytochemistry of PGD(green) in HeLa cells using PGD Rabbit mAb at dilution 1/200, and DAPI(blue)