

# Siltuximab reference antibody



Catalog Number: 176815

## Product name

Siltuximab reference antibody

## Specificity

Human IL-6 / IFN $\beta$ 2

## Antibody description

Anti-IL-6 / IFN $\beta$ 2 Antibody (Siltuximab)

## Preparation

Recombinant expression and purified from CHO cells.

## Formulation

0.1 M Pro-Ac, 20 mM Arg, pH 5.0

## Storage

-80°C for 2 years under sterile conditions; -20°C for 1 year under sterile conditions; Avoid repeated freeze-thaw cycles.

## Clonality

Monoclonal

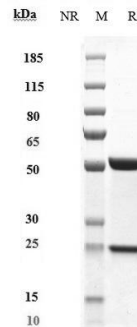
## Ig Type

IgG1

## Applications

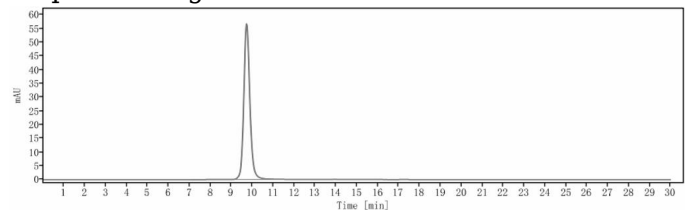
ELISA

## Validations



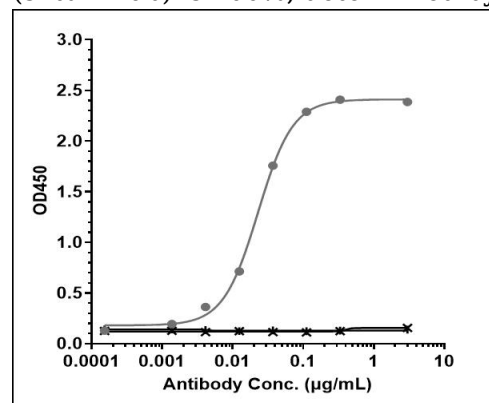
## SDS-PAGE

Anti-IL-6 / IFN $\beta$ 2 Antibody (siltuximab) on SDS-PAGE under reducing (R) condition. The purity of the protein is greater than 95%.



## SEC-HPLC

The purity of Anti-IL-6 / IFN $\beta$ 2 Antibody (siltuximab) is 100%, determined by SEC-HPLC.



Bioactivity: ELISA

Immobilized human IL-6 His at 2  $\mu$ g/mL can bind Anti-IL-6 / IFN $\beta$ 2 Antibody (siltuximab), EC<sub>50</sub>=0.02278  $\mu$ g/mL.