

# RPL14 antibody

Catalog Number: 114815

## Product name

RPL14 antibody

WB: 1:200-1:1000

IP: 1:500-1:5000

## Specificity

Human, Mouse, Rat; other species not tested.

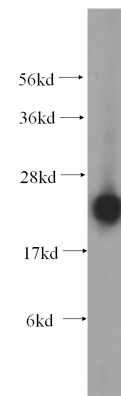
IHC: 1:20-1:200

IF: 1:20-1:200

## Antibody description

RPL14 Rabbit Polyclonal antibody. Positive IP detected in mouse liver tissue. Positive WB detected in HeLa cells, MCF7 cells, mouse liver tissue, rat liver tissue. Positive IF detected in HepG2 cells. Positive IHC detected in human colon cancer tissue. Observed molecular weight by Western-blot: 23 kDa

## Validations



## Preparation

This antibody was obtained by immunization of RPL14 recombinant protein (Accession Number: NM\_001034996). Purification method: Antigen affinity purified.

HeLa cells were subjected to SDS PAGE followed by western blot with Catalog No:114815(RPL14 antibody) at dilution of 1:400

## Formulation

PBS with 0.02% sodium azide and 50% glycerol pH 7.3.

## Storage

Store at -20°C. DO NOT ALIQUOT

## Clonality

Polyclonal

## Ig Type

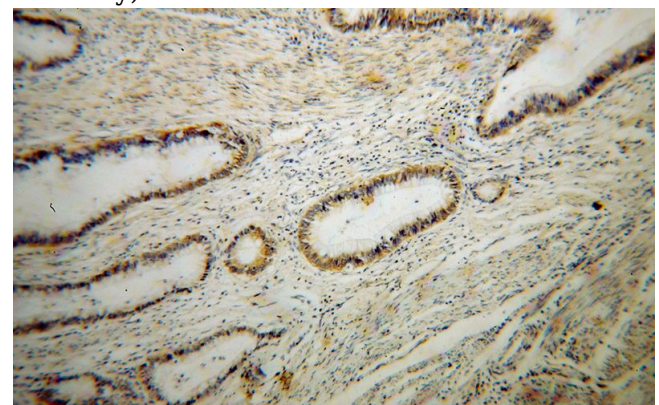
Rabbit IgG

## Applications

ELISA, WB, IHC, IF, IP

## Dilutions

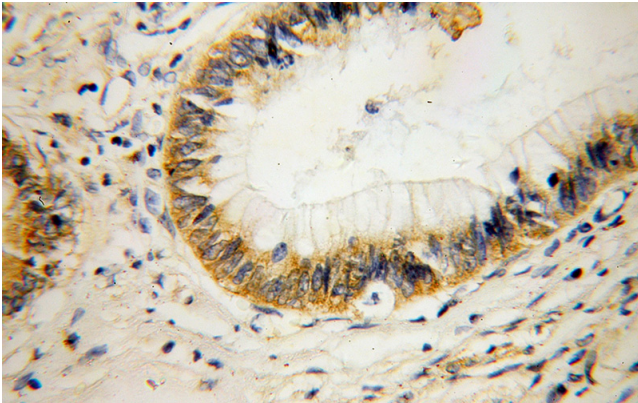
Recommended Dilution:



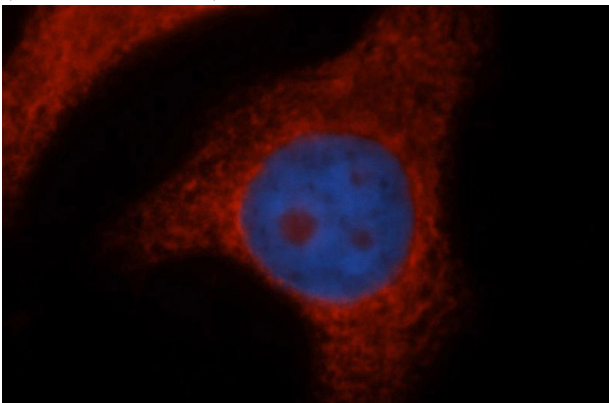
Immunohistochemical of paraffin-embedded human colon cancer using Catalog No:114815(RPL14 antibody) at dilution of 1:100 (under 10x lens)

# RPL14 antibody

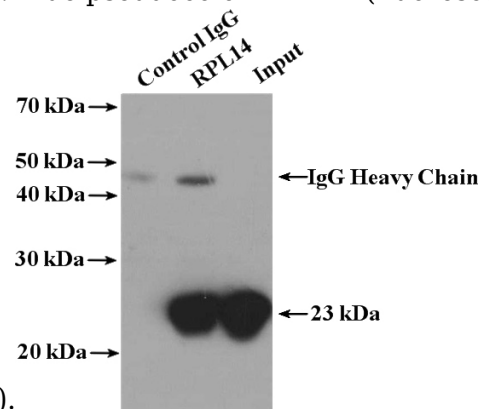
Catalog Number: 114815



Immunohistochemical of paraffin-embedded human colon cancer using Catalog No:114815(RPL14 antibody) at dilution of 1:100 (under 40x lens)



Immunofluorescent analysis of HepG2 cells, using RPL14 antibody Catalog No:114815 at 1:50 dilution and Rhodamine-labeled goat anti-rabbit IgG (red). Blue pseudocolor = DAPI (fluorescent



DNA dye).

IP Result of anti-RPL14 (IP:Catalog No:114815, 4ug; Detection:Catalog No:114815 1:1000) with mouse liver tissue lysate 6800ug.