

Mouse MAP2 (His Tag) recombinant protein



Catalog Number: 502815

General Information

Gene Name Synonym

Initiation factor 2-associated 67 kDa glycoprotein;
Peptidase M

Protein Construction

A DNA sequence encoding the mouse METAP2 (O08663) (Ala 2-Tyr 478) was expressed with a C-terminal polyhistidine tag.

Organism

Mouse

Expression Host

Baculovirus-Insect Cells

QC Testing

Purity

> 88 % as determined by SDS-PAGE

Endotoxin

< 1.0 EU per μg of the protein as determined by the LAL method

Stability

Samples are stable for up to twelve months from date of receipt at -70°C

Predicted N terminal

Met

Molecular Mass

The recombinant mouse METAP2 consists of 488

amino acids and has a calculated molecular mass of 54.3 kDa. It migrates as an approximately 60 kDa band in SDS-PAGE under reducing conditions.

Formulation

Lyophilized from sterile 50mM Tris, 100mM NaCl, pH 8.0, 10% glycerol

1. 5 % trehalose and mannitol are added as protectants before lyophilization.

2. Please contact us for any concerns or special requirements.

Usage Guide

Storage

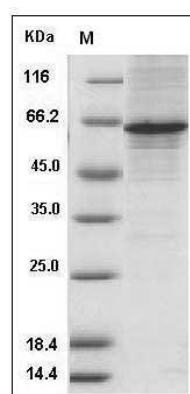
Store it under sterile conditions at -20°C to -80°C .

It is recommended that the protein be aliquoted for optimal storage. Avoid repeated freeze-thaw cycles.

Reconstitution

Adding sterile water, prepare a stock solution of 0.25 mg/ml. Concentration is measured by UV-Vis.

SDS-PAGE



Mouse METAP2 / MAP2 Protein (His Tag) SDS-PAGE