

# CMIP antibody

Catalog Number: 109415

## Product name

CMIP antibody

## Specificity

Human, Mouse, Rat; other species not tested.

## Antibody description

CMIP Rabbit Polyclonal antibody. Positive IHC detected in human testis tissue, human brain tissue, human heart tissue, human kidney tissue, human liver tissue, human lung tissue, human ovary tissue, human placenta tissue. Positive WB detected in Raji cells, K-562 cells. Positive IP detected in Raji cells. Observed molecular weight by Western-blot: 75 kDa

## Preparation

This antibody was obtained by immunization of CMIP recombinant protein (Accession Number: BC038113). Purification method: Antigen affinity purified.

## Formulation

PBS with 0.1% sodium azide and 50% glycerol pH 7.3.

## Storage

Store at -20°C. DO NOT ALIQUOT

## Clonality

Polyclonal

## Ig Type

Rabbit IgG

## Applications

ELISA, WB, IHC, IP

## Dilutions

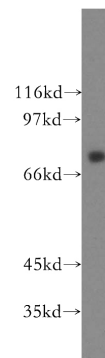
Recommended Dilution:

WB: 1:200-1:2000

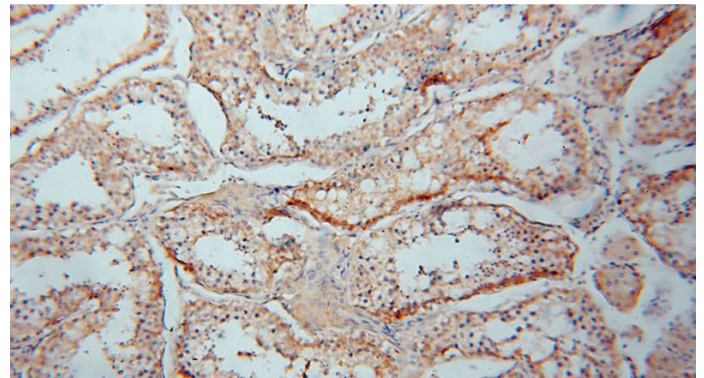
IP: 1:200-1:1000

IHC: 1:20-1:200

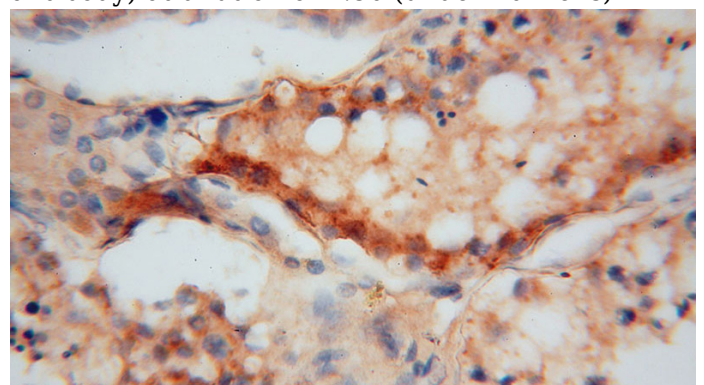
## Validations



Raji cells were subjected to SDS PAGE followed by western blot with Catalog No:109415(CMIP antibody) at dilution of 1:400



Immunohistochemical of paraffin-embedded human testis using Catalog No:109415(CMIP antibody) at dilution of 1:50 (under 10x lens)



# CMIP antibody

Catalog Number: 109415

Immunohistochemical of paraffin-embedded human testis using Catalog No:109415(CMIP antibody) at dilution of 1:50 (under 40x lens)

IP Result of anti-CMIP (IP:Catalog No:109415, 4ug; Detection:Catalog No:109415 1:300) with Raji cells lysate 2000ug.

