

SMAD1 antibody



Catalog Number: 115415

Product name

SMAD1 antibody

IP: 1:200-1:2000

IF: 1:10-1:100

Specificity

Human, Mouse, Rat; other species not tested.

Antibody description

SMAD1 Rabbit Polyclonal antibody. Positive IF detected in HeLa cells, HepG2 cells. Positive WB detected in HepG2 cells, HeLa cells, mouse heart tissue. Positive IP detected in mouse heart tissue. Observed molecular weight by Western-blot: 52 kDa

Preparation

This antibody was obtained by immunization of SMAD1 recombinant protein (Accession Number: NM_001354813). Purification method: Antigen affinity purified.

Formulation

PBS with 0.1% sodium azide and 50% glycerol pH 7.3.

Storage

Store at -20°C. DO NOT ALIQUOT

Clonality

Polyclonal

Ig Type

Rabbit IgG

Applications

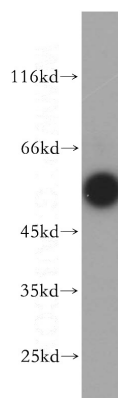
ELISA, WB, IF, IP

Dilutions

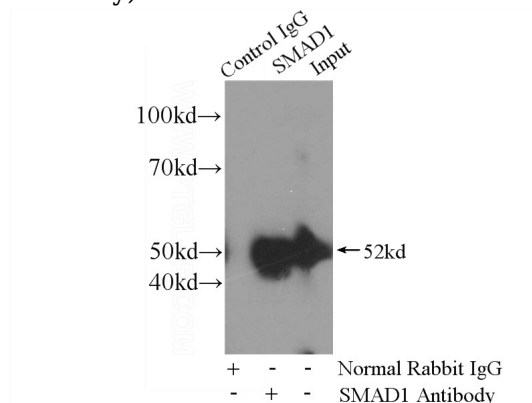
Recommended Dilution:

WB: 1:200-1:2000

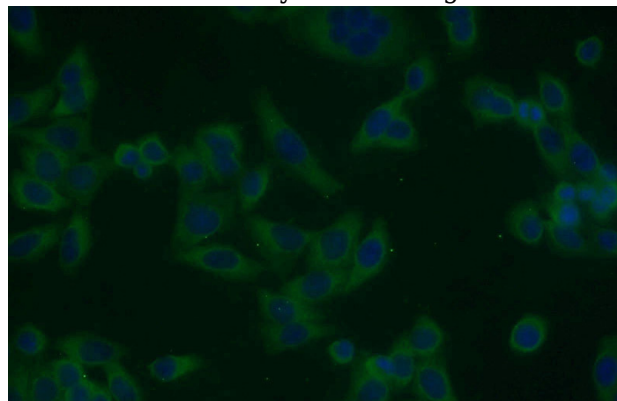
Validations



HepG2 cells were subjected to SDS PAGE followed by western blot with Catalog No:115415(SMAD1 antibody) at dilution of 1:300



IP Result of anti-SMAD1 (IP:Catalog No:115415, 4ug; Detection:Catalog No:115415 1:500) with mouse heart tissue lysate 8000ug.



Immunofluorescent analysis of HeLa cells using Catalog No:115415(SMAD1 Antibody) at dilution 1:10

SMAD1 antibody



Catalog Number: 115415

of 1:25 and Alexa Fluor 488-conjugated AffiniPure Goat Anti-Rabbit IgG(H+L)