

## General Information

### Protein Construction

A DNA sequence encoding the rhesus ERBB3 (XP\_001113953.2) (Met1-Thr643) was expressed with six amino acids (LEVLFQ) at the C-terminus.

### Organism

Rhesus

### Expression Host

Human Cells

## QC Testing

### Activity

1. Measured by its binding ability in a functional ELISA.
2. Immobilized Rhesus ERBB3 at 10 µg/mL (100 µL/well) can bind Human Fc-NRG1 (isoform Beta1) (Cat:504011). The EC<sub>50</sub> of Human Fc-NRG1 (isoform Beta1) is 0.51-1.19 µg/mL.

### Purity

> 90 % as determined by SDS-PAGE.

### Endotoxin

<1.0 EU per µg protein as determined by the LAL method.

### Stability

Samples are stable for up to twelve months from date of receipt at -70°C

### Predicted N terminal

Ser 20

## Molecular Mass

The recombinant rhesus ERBB3 consists 631 amino acids and predicts a molecular mass of 69.5 kDa.

## Formulation

Lyophilized from sterile PBS, 10 % Glycerol, 0.01 % Tween 20, pH 7.4.

1. 5 % trehalose and mannitol are added as protectants before lyophilization.
2. Please contact us for any concerns or special requirements.

## Usage Guide

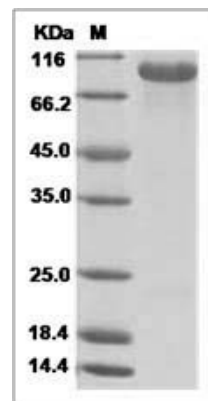
### Storage

Store it under sterile conditions at -20°C to -80°C. It is recommended that the protein be aliquoted for optimal storage. Avoid repeated freeze-thaw cycles.

## Reconstitution

Adding sterile water, prepare a stock solution of 0.25 mg/ml. Concentration is measured by UV-Vis.

## SDS-PAGE



Rhesus HER3 / ErbB3 Protein SDS-PAGE