

# OPTN antibody



Catalog Number: 113415

## Product name

OPTN antibody

## Specificity

Human, Mouse, Rat; other species not tested.

## Antibody description

OPTN Rabbit Polyclonal antibody. Positive IHC detected in human pancreas cancer tissue, human brain tissue. Positive IF detected in MCF-7 cells. Positive FC detected in MCF-7 cells. Positive IP detected in mouse brain tissue. Positive WB detected in HeLa cells, mouse brain tissue, mouse testis tissue. Observed molecular weight by Western-blot: 66 kDa

## Preparation

This antibody was obtained by immunization of OPTN recombinant protein (Accession Number: NM\_001008212). Purification method: Antigen affinity purified.

## Formulation

PBS with 0.1% sodium azide and 50% glycerol pH 7.3.

## Storage

Store at -20°C. DO NOT ALIQUOT

## Clonality

Polyclonal

## Ig Type

Rabbit IgG

## Applications

ELISA, WB, IHC, IF, IP, FC

## Dilutions

Recommended Dilution:

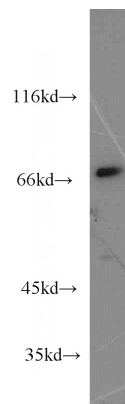
WB: 1:500-1:5000

IP: 1:200-1:2000

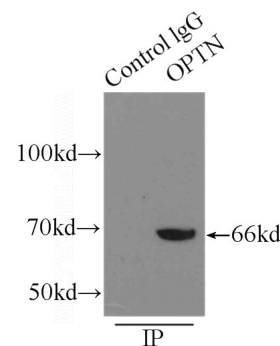
IHC: 1:20-1:200

IF: 1:10-1:100

## Validations



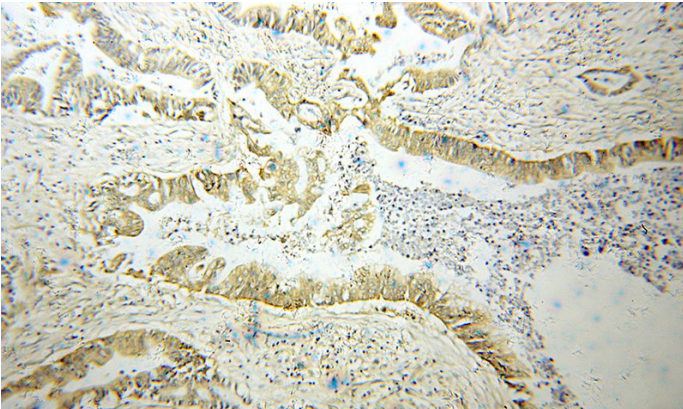
HeLa cells were subjected to SDS PAGE followed by western blot with Catalog No:113415(OPTN antibody) at dilution of 1:800



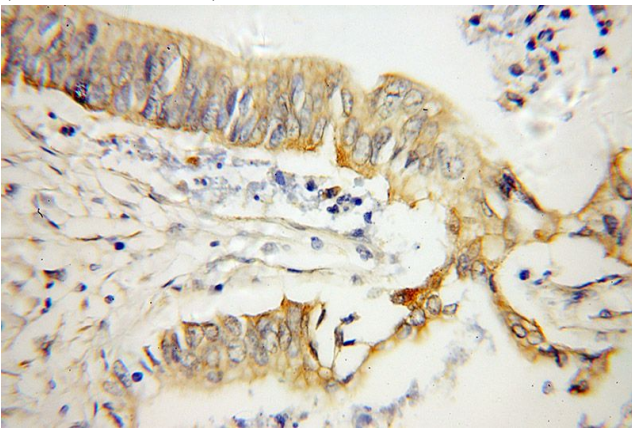
IP Result of anti-OPTN (IP:Catalog No:113415, 3ug; Detection:Catalog No:113415 1:800) with mouse brain tissue lysate 8000ug.

# OPTN antibody

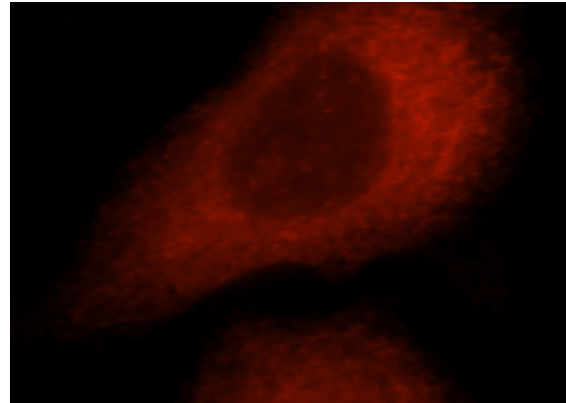
Catalog Number: 113415



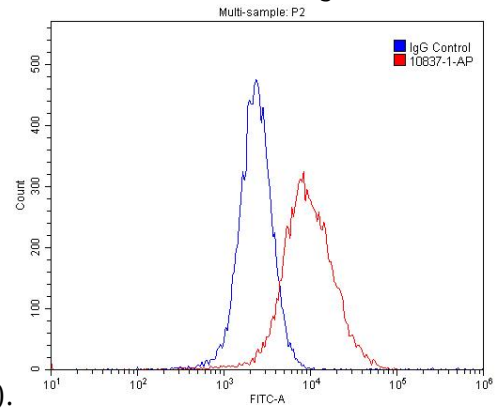
Immunohistochemical of paraffin-embedded human pancreas cancer using Catalog No:113415(OPTN antibody) at dilution of 1:50 (under 10x lens)



Immunohistochemical of paraffin-embedded human pancreas cancer using Catalog No:113415(OPTN antibody) at dilution of 1:50 (under 40x lens)



Immunofluorescent analysis of MCF-7 cells, using OPTN antibody Catalog No:113415 at 1:25 dilution and Rhodamine-labeled goat anti-rabbit



IgG (red).

$1 \times 10^6$  MCF-7 cells were stained with 0.2ug OPTN antibody (Catalog No:113415, red) and control antibody (blue). Fixed with 4% PFA blocked with 3% BSA (30 min). Alexa Fluor 488-conjugated AffiniPure Goat Anti-Rabbit IgG(H+L) with dilution 1:1500.