

HLA class I (HLA-B) antibody



Catalog Number: 111415

Product name

HLA class I (HLA-B) antibody

Specificity

Human; other species not tested.

Antibody description

HLA class I (HLA-B) Rabbit Polyclonal antibody. Positive IF detected in HepG2 cells. Positive IHC detected in human spleen tissue, human heart tissue, human kidney tissue, human lung tissue, human ovary tissue. Positive IP detected in HepG2 cells. Positive WB detected in Jurkat cells, HeLa cells, HepG2 cells, MCF7 cells. Observed molecular weight by Western-blot: 40-45kd

Preparation

This antibody was obtained by immunization of HLA class I (HLA-B) recombinant protein (Accession Number: BC013187). Purification method: Antigen affinity purified.

Formulation

PBS with 0.02% sodium azide and 50% glycerol pH 7.3.

Storage

Store at -20°C. DO NOT ALIQUOT

Clonality

Polyclonal

Ig Type

Rabbit IgG

Applications

ELISA, WB, IHC, IF, IP

Dilutions

Recommended Dilution:

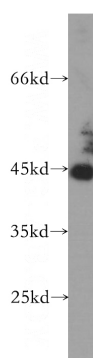
WB: 1:1000-1:10000

IP: 1:1000-1:10000

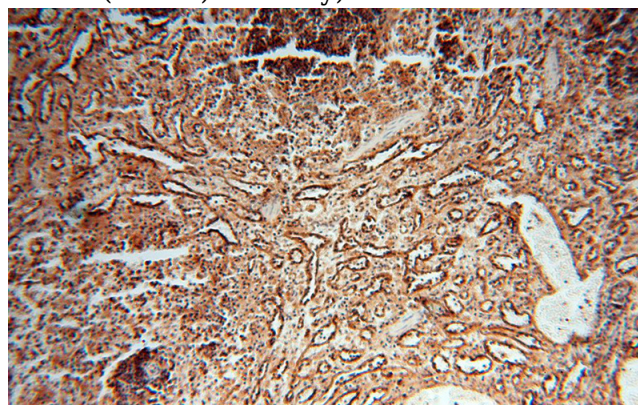
IHC: 1:20-1:200

IF: 1:20-1:200

Validations



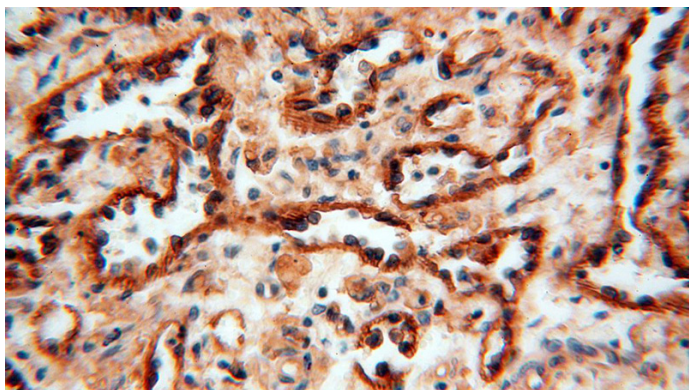
Jurkat cells were subjected to SDS PAGE followed by western blot with Catalog No:111415(HLA class I (HLA-B) antibody) at dilution of 1:800



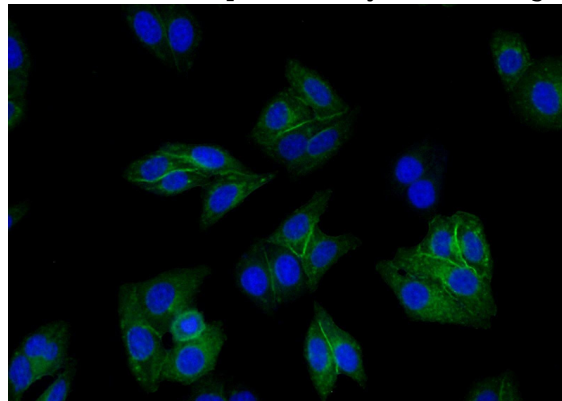
Immunohistochemical of paraffin-embedded human spleen using Catalog No:111415(HLA class I (HLA-B) antibody) at dilution of 1:100 (under 10x lens)

HLA class I (HLA-B) antibody

Catalog Number: 111415

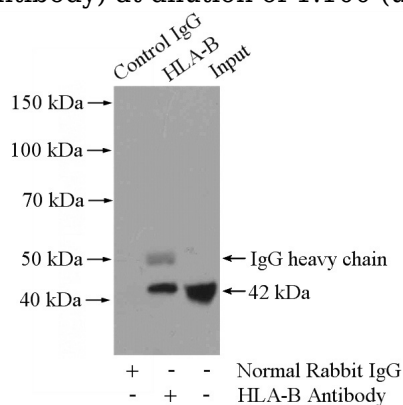


IP Result of anti-HLA class I (HLA-B) (IP:Catalog No:111415, 4ug; Detection:Catalog No:111415 1:2000) with HepG2 cells lysate 4000ug.



Immunohistochemical of paraffin-embedded human spleen using Catalog No:111415(HLA class I (HLA-B) antibody) at dilution of 1:100 (under 40x

Immunofluorescent analysis of HepG2 cells using Catalog No:111415(HLA class I (HLA-B) Antibody) at dilution of 1:50 and Alexa Fluor 488-conjugated AffiniPure Goat Anti-Rabbit IgG(H+L)



lens)