

Anti-AKT1/3 Rabbit antibody



Catalog Number: 169015

Product name

Anti-AKT1/3 Rabbit antibody

Specificity

Human, Mouse, Rat

Antibody description

AKT1/3 Rabbit monoclonal antibody

Preparation

Antigen: A synthetic peptide of human AKT1

Formulation

Supplied in 50nM Tris-Glycine(pH 7.4), 0.15M NaCl, 40%Glycerol, 0.01% sodium azide and 0.05% BSA.

Storage

Store at 4°C short term. Aliquot and store at -20°C long term. Avoid freeze / thaw cycle.

Clonality

Monoclonal

Ig Type

Rabbit IgG

Applications

WB, ICC/IF, IP

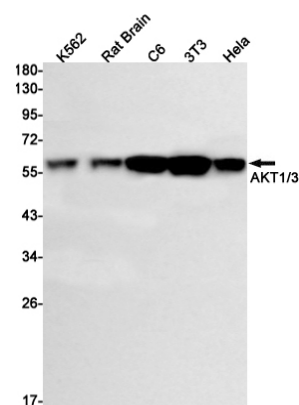
Dilutions

WB: 1/1000

ICC/IF: 1/200

IP: 1/50

Validations



Western blot detection of AKT1/3 in K562,Rat Brain,C6,3T3,Hela cell lysates using AKT1/3 Rabbit mAb(1:1000 diluted).Predicted band size:56kDa.Observed band size:56kDa.