

Zimberelimab reference antibody



Catalog Number: 177015

Product name

Zimberelimab reference antibody

Specificity

Human PDCD1 / PD-1 / CD279

Antibody description

Anti-PDCD1 / PD-1 / CD279 Antibody
(Zimberelimab)

Preparation

Recombinant expression and purified from CHO cells.

Formulation

0.1 M Pro-Ac, 20 mM Arg, pH 5.0

Storage

-80°C for 2 years under sterile conditions; -20°C for 1 year under sterile conditions; Avoid repeated freeze-thaw cycles.

Clonality

Monoclonal

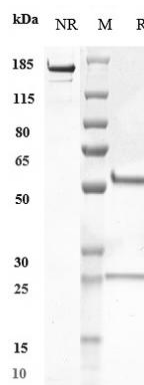
Ig Type

IgG4SP

Applications

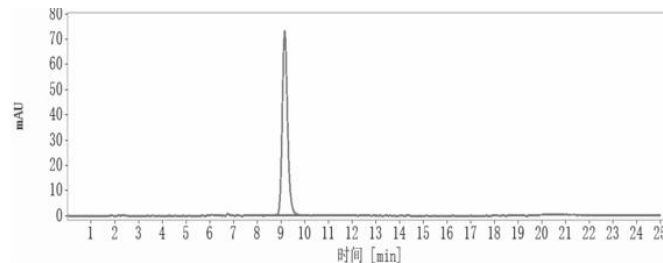
ELISA

Validations



SDS-PAGE

Anti-PDCD1 / PD-1 / CD279 Antibody (zimberelimab) on SDS-PAGE under reducing (R) condition. The purity of the protein is greater than 90%.



SEC-HPLC

The purity of Anti-PDCD1 / PD-1 / CD279 Antibody (zimberelimab) is more than 95%, determined by SEC-HPLC.