

Anti-STAT5a/b Rabbit antibody



Catalog Number: 167015

Product name

Anti-STAT5a/b Rabbit antibody

WB: 1/1000-1/2000

IHC: 1/100-1/500

Specificity

Human, Mouse, Rat

ICC/IF: 1/50-1/200

IP: 1/50

FC: 1/50

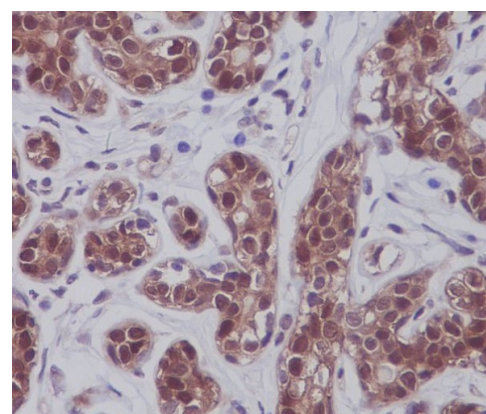
Antibody description

STAT5a/b Rabbit polyclonal antibody

Validations

Preparation

Antigen: A synthesized peptide derived from human STAT5A/B



Formulation

Rabbit IgG in phosphate buffered saline , pH 7.4, 150mM NaCl, 0.02% sodium azide and 50% glycerol.

Storage

Store at 4°C short term. Store at -20°C long term. Avoid freeze / thaw cycle.

Immunohistochemical analysis of paraffin-embedded human breast, using STAT5A/B

Clonality

Polyclonal

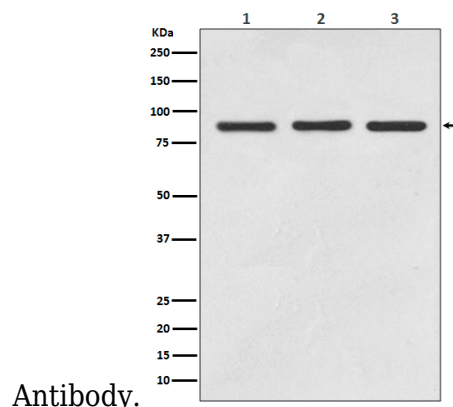
Ig Type

Rabbit IgG

Applications

WB, IHC-P, ICC/IF, IP, FC

Dilutions



Antibody.

Western blot analysis of STAT5A/B expression in (1) Jurkat cell lysate; (2) 3T3 cell lysate; (2) PC12 cell lysate.