

Anti-DOP1B antibody

Catalog Number: 175015

Product name

Anti-DOP1B antibody

Specificity

Human, Mouse

Antibody description

Rabbit polyclonal antibody to DOP1B

Preparation

This antigen of this antibody was synthetic peptide within human dopey2 aa 1030-1094.

Formulation

Liquid, 1*PBS (pH7.4), 0.2% BSA, 40% Glycerol.
Preservative: 0.05% Sodium Azide.

Storage

Store at +4°C after thawing. Aliquot store at -20°C or -80°C. Avoid repeated freeze / thaw cycles.

Clonality

Polyclonal

Ig Type

Rabbit IgG

Applications

WB, ICC, IHC-P, FC

Dilutions

WB: 1:500-1:1,000

IHC-P: 1:50-1:200

ICC: 1:50-1:200

FC: 1:50-1:100

Validations

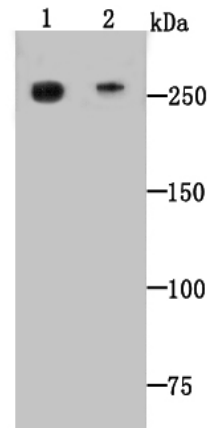


Fig1: Western blot analysis of Dopey-2 on mouse heart (1) and human heart (2) tissue lysate using anti-Dopey-2 antibody at 1/500 dilution.

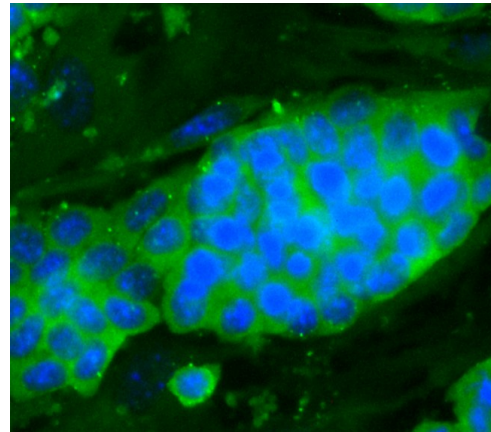


Fig2: ICC staining Dopey-2 in D3 cells (green). The nuclear counter stain is DAPI (blue). Cells were fixed in paraformaldehyde, permeabilised with 0.25% Triton X100/PBS.

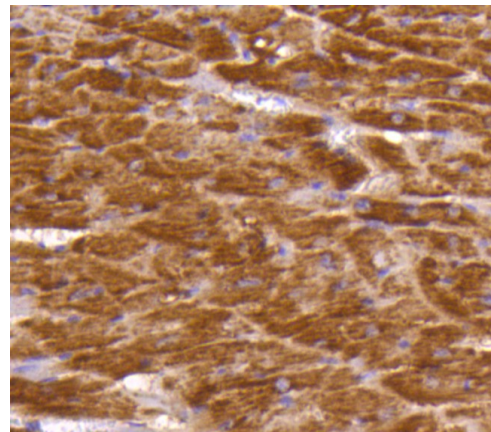
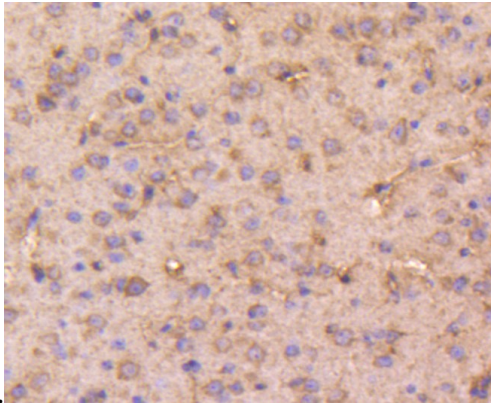


Fig3: Immunohistochemical analysis of formalin-fixed, paraffin-embedded mouse heart tissue labeling Dopey-2. Counterstained with

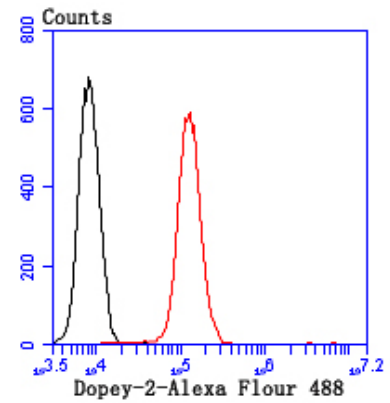
Anti-DOP1B antibody

Catalog Number: 175015



Hematoxylin.

Fig4: Immunohistochemical analysis of formalin-fixed, paraffin-embedded mouse brain tissue labeling Dopey-2. Counterstained with



Hematoxylin.

Fig5: Flow cytometric analysis of N2A cells with Dopey-2 antibody at 1/100 dilution (red) compared with an unlabelled control (cells without incubation with primary antibody; black). Alexa Fluor 488-conjugated goat anti-rabbit IgG was used as the secondary antibody.