

# PLUNC antibody

Catalog Number: 114015

## Product name

PLUNC antibody

IP: 1:200-1:1000

IHC: 1:50-1:500

## Specificity

Human, Mouse; other species not tested.

## Antibody description

PLUNC Rabbit Polyclonal antibody. Positive IHC detected in mouse lung tissue, human lung cancer tissue. Positive IP detected in mouse lung tissue. Positive WB detected in Transfected HEK-293 cells.

## Preparation

This antibody was obtained by immunization of PLUNC recombinant protein (Accession Number: NM\_001243193). Purification method: Antigen affinity purified.

## Formulation

PBS with 0.1% sodium azide and 50% glycerol pH 7.3.

## Storage

Store at -20°C. DO NOT ALIQUOT

## Clonality

Polyclonal

## Ig Type

Rabbit IgG

## Applications

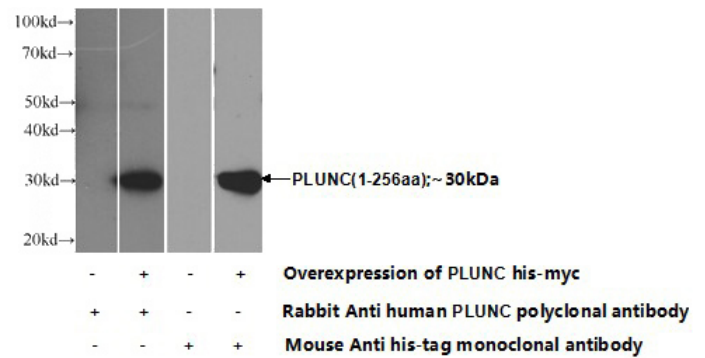
ELISA, WB, IHC, IP

## Dilutions

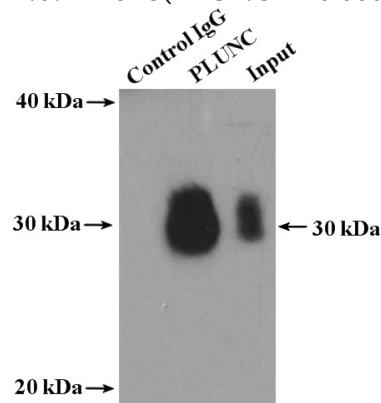
Recommended Dilution:

WB: 1:500-1:5000

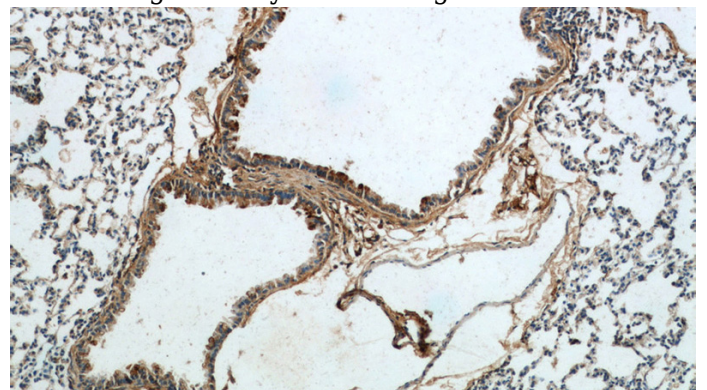
## Validations



Transfected HEK-293 cells were subjected to SDS PAGE followed by western blot with Catalog No:114015(PLUNC Antibody) at dilution of 1:1000



IP Result of anti-PLUNC (IP:Catalog No:114015, 4ug; Detection:Catalog No:114015 1:300) with mouse lung tissue lysate 3600ug.



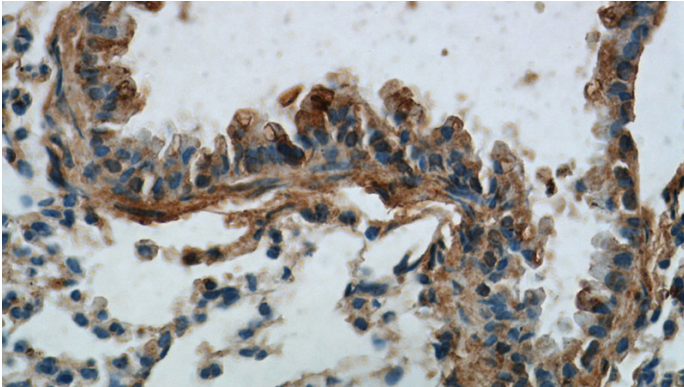
Immunohistochemistry of paraffin-embedded mouse lung tissue slide using Catalog No:114015(PLUNC Antibody) at dilution of 1:100

# PLUNC antibody

Catalog Number: 114015

---

(under 10x lens).



Immunohistochemistry of paraffin-embedded mouse lung tissue slide using Catalog No:114015(PLUNC Antibody) at dilution of 1:100 (under 40x lens).