

# KIF4A antibody

Catalog Number: 112015

## Product name

KIF4A antibody

## Specificity

human, mouse, rat; other species not tested.

## Antibody description

KIF4A Rabbit Polyclonal antibody. Positive IF detected in HepG2. Positive IHC detected in human lung cancer.

## Preparation

This antibody was obtained by immunization of KIF4A recombinant protein (Accession Number: BC050548). Purification method: Antigen affinity purified.

## Formulation

PBS with 0.02% sodium azide and 50% glycerol pH 7.3.

## Storage

Store at -20°C. DO NOT ALIQUOT

## Clonality

Polyclonal

## Ig Type

Rabbit IgG

## Applications

ELISA, IHC, IF

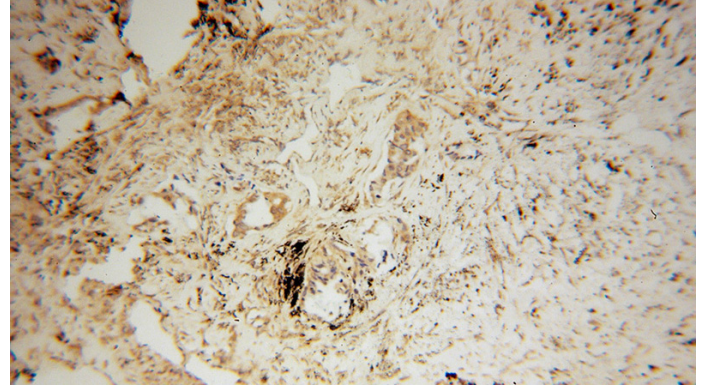
## Dilutions

Recommended Dilution:

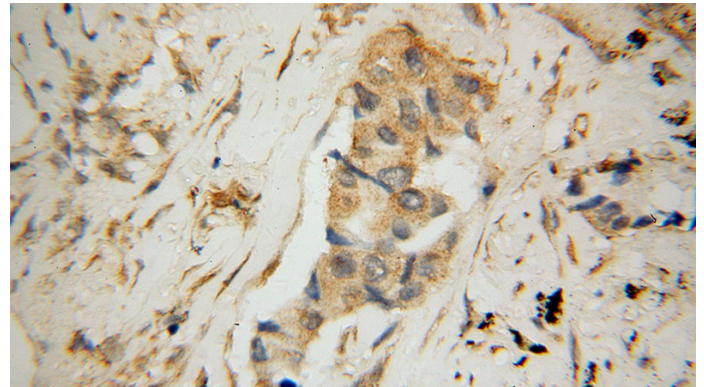
IHC: 1:20-1:200

IF: 1:20-1:200

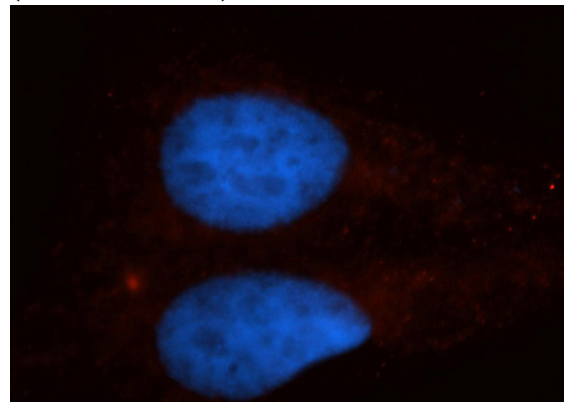
## Validations



Immunohistochemical of paraffin-embedded human lung cancer using Catalog No:112015(KIF4A antibody) at dilution of 1:50 (under 10x lens)



Immunohistochemical of paraffin-embedded human lung cancer using Catalog No:112015(KIF4A antibody) at dilution of 1:50 (under 40x lens)



Immunofluorescent analysis of HepG2 cells, using KIF4A antibody Catalog No:112015 at 1:50 dilution and Rhodamine-labeled goat anti-rabbit IgG (red). Blue pseudocolor = DAPI (fluorescent)

# KIF4A antibody



Catalog Number: 112015

---

DNA dye).