

# CYP4F11 antibody



Catalog Number: 109705

## Product name

CYP4F11 antibody

## Specificity

human; other species not tested.

## Antibody description

CYP4F11 Rabbit Polyclonal antibody. Positive IHC detected in human liver cancer. Positive WB detected in human liver tissue, human kidney tissue. Observed molecular weight by Western-blot: 57kd

## Preparation

This antibody was obtained by immunization of CYP4F11 recombinant protein (Accession Number: NM\_021187). Purification method: Antigen affinity purified.

## Formulation

PBS with 0.1% sodium azide and 50% glycerol pH 7.3.

## Storage

Store at -20°C. DO NOT ALIQUOT

## Clonality

Polyclonal

## Ig Type

Rabbit IgG

## Applications

ELISA, WB, IHC

## Dilutions

Recommended Dilution:

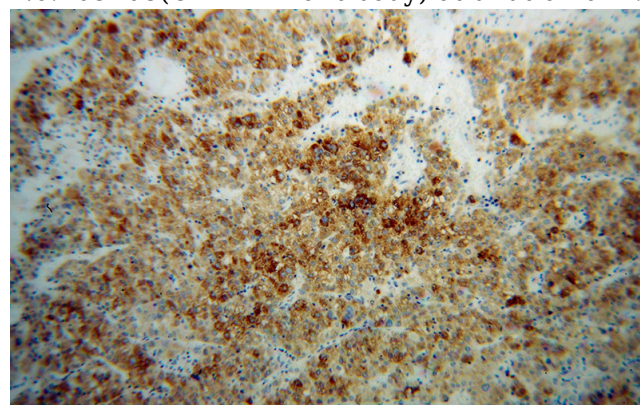
WB: 1:500-1:5000

IHC: 1:20-1:200

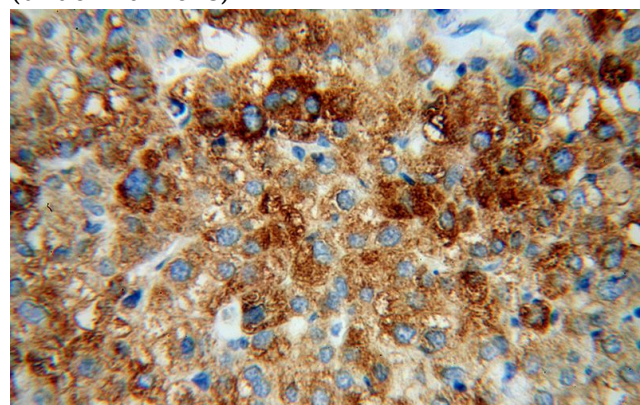
## Validations



human liver tissue were subjected to SDS PAGE followed by western blot with Catalog No:109705(CYP4F11 antibody) at dilution of 1:500



Immunohistochemical of paraffin-embedded human liver cancer using Catalog No:109705(CYP4F11 antibody) at dilution of 1:100 (under 10x lens)



Immunohistochemical of paraffin-embedded human liver cancer using Catalog

# CYP4F11 antibody



Catalog Number: 109705

---

No:109705(CYP4F11 antibody) at dilution of 1:100 (under 40x lens)