

# Anti-GDF11 antibody

Catalog Number: 176705

## Product name

Anti-GDF11 antibody

## Specificity

Human, Mouse, Rat

## Antibody description

Rabbit polyclonal antibody to GDF11

## Preparation

This antigen of this antibody was recombinant protein

## Formulation

Liquid, 1\*PBS (pH7.4), 0.2% BSA, 40% Glycerol.  
Preservative: 0.05% Sodium Azide.

## Storage

Store at +4°C after thawing. Aliquot store at -20°C. Avoid repeated freeze / thaw cycles.

## Clonality

Polyclonal

## Ig Type

Rabbit IgG

## Applications

WB, ICC, IHC-P, FC

## Dilutions

ICC: 1:50-1:200

IHC-P: 1:50-1:200

FC: 1:50-1:100

WB: 1:500

## Validations

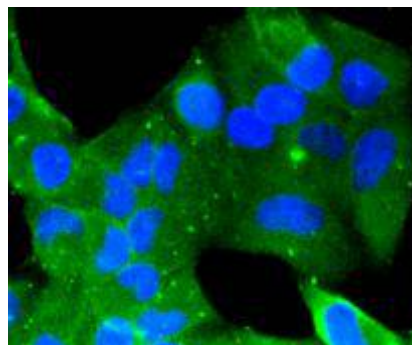


Fig1: Immunocytochemical staining of HeLa cells using anti-BMP11 rabbit polyclonal antibody.

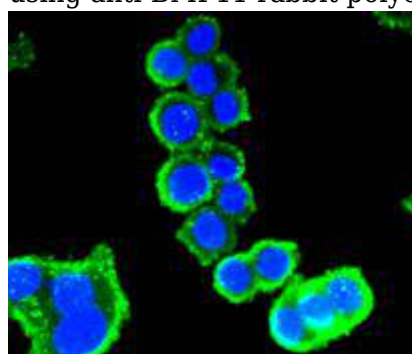


Fig2: Immunocytochemical staining of SW480 cells using anti-BMP11 rabbit polyclonal antibody.

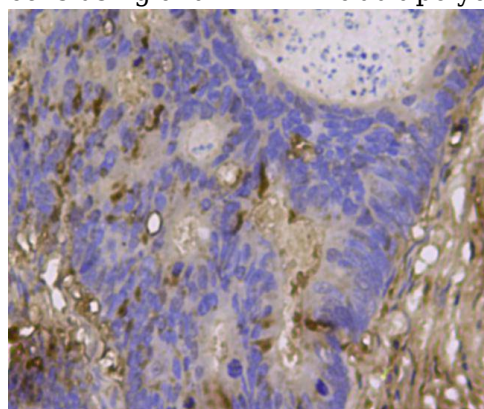
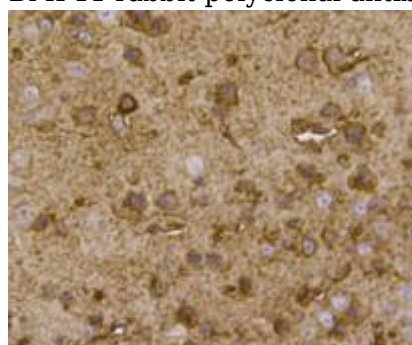


Fig3: Immunohistochemical analysis of paraffin-embedded human colon cancer tissue using anti-BMP11 rabbit polyclonal antibody.



Catalog Number: 176705

---

Fig4: Immunohistochemical analysis of paraffin-embedded mouse brain tissue using anti-BMP11 rabbit polyclonal antibody.

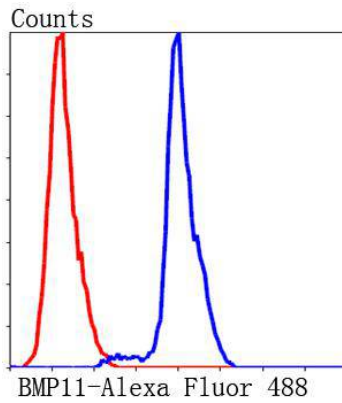


Fig5: Flow cytometric analysis of HepG2 cells with BMP11 antibody at 1/100 dilution (blue) compared with an unlabelled control (cells without incubation with primary antibody; red). Alexa Fluor 488-conjugated Goat anti rabbit IgG was used as the secondary antibody.