

MMP28 antibody



Catalog Number: 112705

Product name

MMP28 antibody

WB: 1:500-1:5000

IHC: 1:20-1:200

Specificity

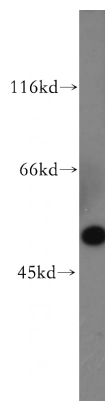
Human, Mouse, Rat; other species not tested.

IF: 1:10-1:100

Validations

Antibody description

MMP28 Rabbit Polyclonal antibody. Positive IF detected in A549 cells. Positive IHC detected in human kidney tissue, human ovary tissue, human skin cancer tissue, human testis tissue. Positive WB detected in A549 cells, human colon tissue, mouse heart tissue. Observed molecular weight by Western-blot: 48 kDa



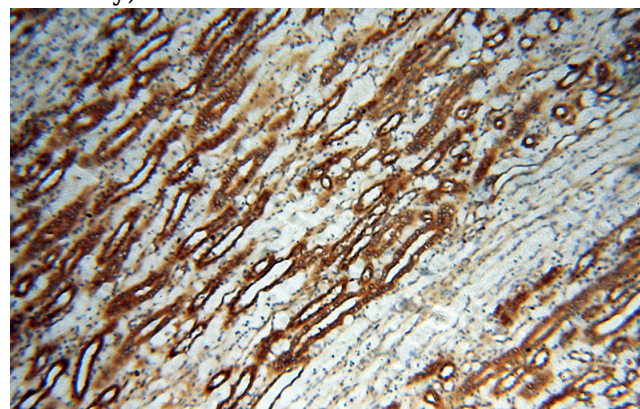
Preparation

This antibody was obtained by immunization of MMP28 recombinant protein (Accession Number: NM_032950). Purification method: Antigen affinity purified.

A549 cells were subjected to SDS PAGE followed by western blot with Catalog No:112705(MMP28 antibody) at dilution of 1:500

Formulation

PBS with 0.02% sodium azide and 50% glycerol pH 7.3.



Storage

Store at -20°C. DO NOT ALIQUOT

Clonality

Polyclonal

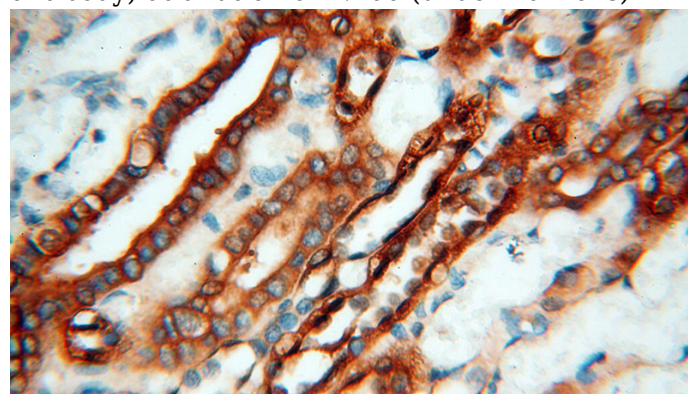
Immunohistochemical of paraffin-embedded human kidney using Catalog No:112705(MMP28 antibody) at dilution of 1:100 (under 10x lens)

Ig Type

Rabbit IgG

Applications

ELISA, WB, IHC, IF



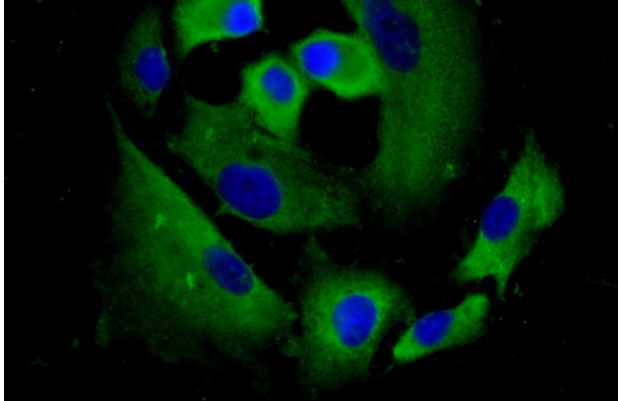
Dilutions

Recommended Dilution:

MMP28 antibody

Catalog Number: 112705

Immunohistochemical of paraffin-embedded human kidney using Catalog No:112705(MMP28 antibody) at dilution of 1:100 (under 40x lens)



Immunofluorescent analysis of (-20oc Ethanol) fixed A549 cells using Catalog No:112705(MMP28 Antibody) at dilution of 1:25 and Alexa Fluor 488-conjugated AffiniPure Goat Anti-Rabbit IgG(H+L)