

Mouse Complement Component C2 (His Tag) recombinant protein



Catalog Number: 500705

General Information

Gene Name Synonym

C3/C5 convertase; Complement C2b fragment;
Complement C2a fragment

Protein Construction

A DNA sequence encoding the mouse C2 (NP_038512.2) (Met1-Leu760) was expressed with a C-terminal polyhistidine tag.

Organism

Mouse

Expression Host

Human Cells

QC Testing

Purity

> 85 % as determined by SDS-PAGE

Endotoxin

< 1.0 EU per μg of the protein as determined by the LAL method

Stability

Samples are stable for up to twelve months from date of receipt at -70°C

Predicted N terminal

Leu 20

Molecular Mass

The recombinant mouse C2 comprises 752 amino acids and has a predicted molecular mass of 84.2 kDa. The apparent molecular mass of the protein is approximately 91.2 kDa in SDS-PAGE under reducing conditions.

Formulation

Lyophilized from sterile PBS, pH 7.4.

1. 5 % trehalose and mannitol are added as protectants before lyophilization.
2. Please contact us for any concerns or special requirements.

Usage Guide

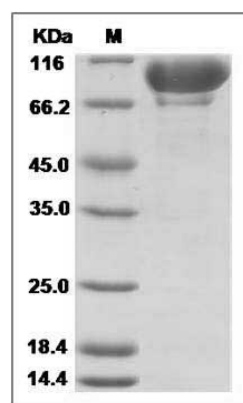
Storage

Store it under sterile conditions at -20°C to -80°C . It is recommended that the protein be aliquoted for optimal storage. Avoid repeated freeze-thaw cycles.

Reconstitution

Adding sterile water, prepare a stock solution of 0.25 mg/ml. Concentration is measured by UV-Vis.

SDS-PAGE



Mouse C2 / Complement Component 2 Protein (His Tag) SDS-PAGE