

CHURC1 antibody



Catalog Number: 109305

Product name

CHURC1 antibody

IHC: 1:20-1:200

Specificity

Human, Mouse, Rat; other species not tested.

Antibody description

CHURC1 Rabbit Polyclonal antibody. Positive WB detected in mouse skin tissue, HeLa cells, mouse liver tissue, U-937 cells. Positive IHC detected in human brain tissue, human gliomas tissue, human kidney tissue. Observed molecular weight by Western-blot: 13 kDa

Preparation

This antibody was obtained by immunization of CHURC1 recombinant protein (Accession Number: NM_001386928). Purification method: Antigen affinity purified.

Formulation

PBS with 0.02% sodium azide and 50% glycerol pH 7.3.

Storage

Store at -20°C. DO NOT ALIQUOT

Clonality

Polyclonal

Ig Type

Rabbit IgG

Applications

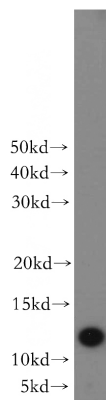
ELISA, IHC, WB

Dilutions

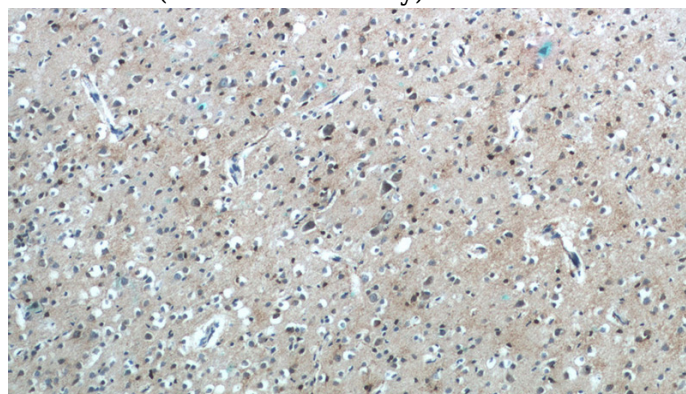
Recommended Dilution:

WB: 1:200-1:1000

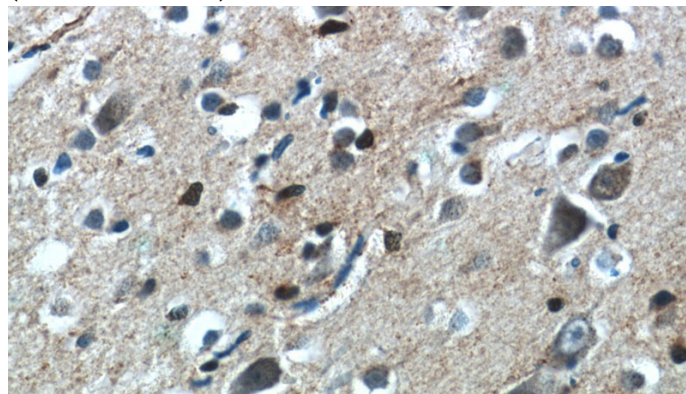
Validations



mouse skin tissue were subjected to SDS PAGE followed by western blot with Catalog No:109305(CHURC1 antibody) at dilution of 1:300



Immunohistochemistry of paraffin-embedded human brain tissue slide using Catalog No:109305(CHURC1 Antibody) at dilution of 1:50 (under 10x lens)



Immunohistochemistry of paraffin-embedded human brain tissue slide using Catalog No:109305(CHURC1 Antibody) at dilution of 1:50

CHURC1 antibody



Catalog Number: 109305

(under 40x lens)