

LPL antibody

Catalog Number: 112305

Product name

Polyclonal

LPL antibody

Ig Type

Specificity

Rabbit IgG

Human,Mouse,Rat; other species not tested.

Applications

Antibody description

ELISA, WB

LPL Rabbit Polyclonal antibody. Positive WB detected in MCF-7 cells, HeLa cells, mouse skeletal muscle tissue. Observed molecular weight by Western-blot: 53 kDa

Dilutions

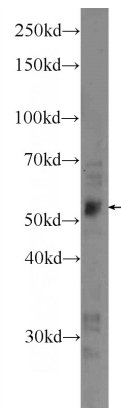
Recommended Dilution:

WB: 1:200-1:1000

Preparation

This antibody was obtained by immunization of LPL recombinant protein (Accession Number: NM_000237). Purification method: Antigen affinity purified.

Validations



Formulation

PBS with 0.1% sodium azide and 50% glycerol pH 7.3.

Storage

Store at -20°C. DO NOT ALIQUOT

MCF-7 cells were subjected to SDS PAGE followed by western blot with Catalog No:112305(LPL Antibody) at dilution of 1:300

Clonality