

# EDIL3 antibody



Catalog Number: 110305

## Product name

EDIL3 antibody

Recommended Dilution:

WB: 1:1000-1:10000

## Specificity

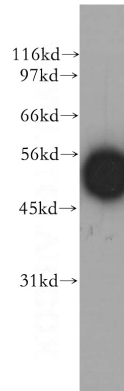
Human, Mouse, Rat; other species not tested.

IHC: 1:20-1:200

## Antibody description

EDIL3 Rabbit Polyclonal antibody. Positive IHC detected in human pancreas cancer tissue, human liver cancer tissue, human lung cancer tissue. Positive WB detected in human lung tissue, COLO 320 cells, HEK-293 cells, HeLa cells, HepG2 cells, K-562 cells, mouse brain tissue, mouse lung tissue. Observed molecular weight by Western-blot: 52-55 kDa

## Validations



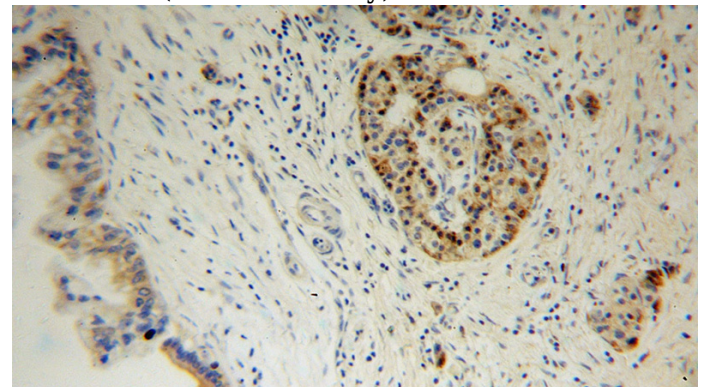
## Preparation

This antibody was obtained by immunization of EDIL3 recombinant protein (Accession Number: NM\_005711). Purification method: Antigen affinity purified.

human lung tissue were subjected to SDS PAGE followed by western blot with Catalog No:110305(EDIL3 antibody) at dilution of 1:400

## Formulation

PBS with 0.1% sodium azide and 50% glycerol pH 7.3.



## Storage

Store at -20°C. DO NOT ALIQUOT

## Clonality

Polyclonal

## Ig Type

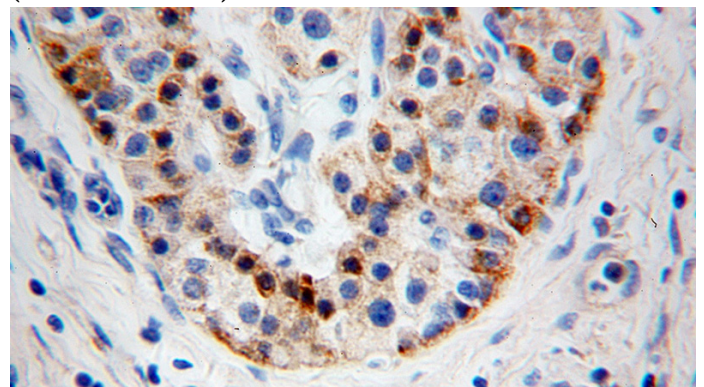
Rabbit IgG

## Applications

ELISA, WB, IHC

## Dilutions

Immunohistochemical of paraffin-embedded human pancreas cancer using Catalog No:110305(EDIL3 antibody) at dilution of 1:100 (under 10x lens)



# EDIL3 antibody



Catalog Number: 110305

---

Immunohistochemical of paraffin-embedded  
human pancreas cancer using Catalog

No:110305(EDIL3 antibody) at dilution of 1:100  
(under 40x lens)