

CSPG4,NG2 antibody



Catalog Number: 109605

Product name

CSPG4,NG2 antibody

Specificity

Human,Mouse,Rat; other species not tested.

Antibody description

CSPG4,NG2 Rabbit Polyclonal antibody. Positive IHC detected in human lung cancer tissue. Positive WB detected in A375 cells. Observed molecular weight by Western-blot: 240-250kd

Preparation

This antibody was obtained by immunization of Peptide (Accession Number: NM_001897). Purification method: Antigen affinity purified.

Formulation

0.1M NaHCO₃, 0.1M glycine, 0.02% sodium azide and 50% glycerol pH 7.3.

Storage

Store at -20°C. DO NOT ALIQUOT

Clonality

Polyclonal

Ig Type

Rabbit IgG

Applications

ELISA, WB, IHC

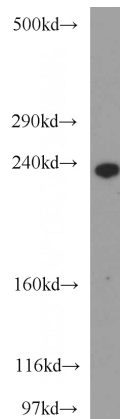
Dilutions

Recommended Dilution:

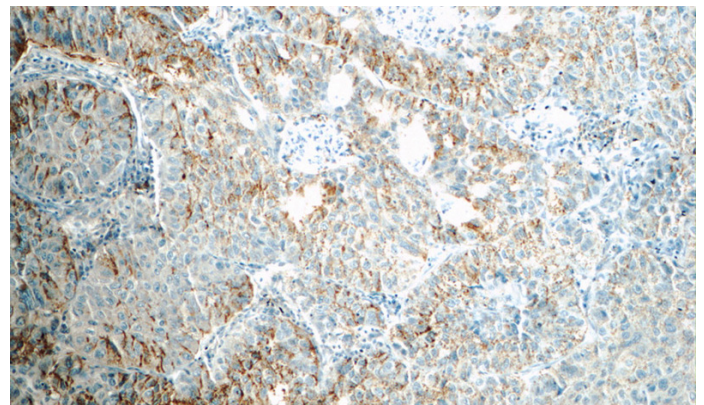
WB: 1:500-1:5000

IHC: 1:20-1:200

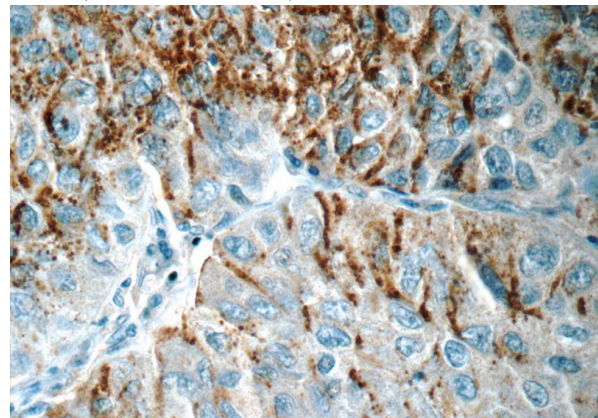
Validations



A375 cells were subjected to SDS PAGE followed by western blot with Catalog No:109605(CSPG4,NG2 antibody) at dilution of 1:300



Immunohistochemistry of paraffin-embedded human lung cancer tissue slide using Catalog No:109605(CSPG4,NG2 Antibody) at dilution of 1:50 (under 10x lens)



Immunohistochemistry of paraffin-embedded human lung cancer tissue slide using Catalog No:109605(CSPG4,NG2 Antibody) at dilution of 1:50 (under 40x lens)