

# Anti-Nucleophosmin Rabbit antibody



Catalog Number: 168605

## Product name

Anti-Nucleophosmin Rabbit antibody

## Specificity

Human

## Antibody description

Nucleophosmin Rabbit monoclonal antibody

## Preparation

Antigen: A synthetic peptide of human Nucleophosmin

## Formulation

50nM Tris-Glycine(pH 7.4), 0.15M NaCl, 40%Glycerol, 0.01% sodium azide and 0.05% BSA.

## Storage

Store at 4°C short term. Store at -20°C long term. Avoid freeze / thaw cycle.

## Clonality

Monoclonal

## Ig Type

Rabbit IgG

## Applications

WB, IHC-P, FC, IP

## Dilutions

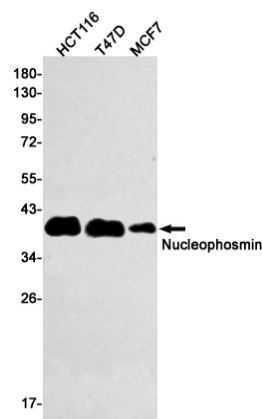
WB: 1/5000

IHC: 1/20-1/100

FC: 1/20

IP: 1/20

## Validations



Western blot detection of Nucleophosmin in HCT116, T47D, MCF7 cell lysates using Nucleophosmin Rabbit mAb(1:500 diluted). Predicted band size: 33kDa. Observed band size: 38kDa.