

# SSB antibody



Catalog Number: 115605

## Product name

SSB antibody

Recommended Dilution:

WB: 1:200-1:1000

## Immunogen

[Human SSB Recombinant protein \(GST tag\)](#)

IP: 1:200-1:1000

IHC: 1:20-1:200

## Specificity

Human, Mouse, Rat; other species not tested.

IF: 1:20-1:200

## Antibody description

SSB Rabbit Polyclonal antibody. Positive IHC detected in human colon cancer tissue. Positive IF detected in HeLa cells. Positive WB detected in Jurkat cells, HEK-293 cells, HeLa cells. Positive IP detected in Jurkat cells. Observed molecular weight by Western-blot: 48 kDa

## Preparation

This antibody was obtained by immunization of SSB recombinant protein (Accession Number: NM\_003142). Purification method: Antigen affinity purified.

## Formulation

PBS with 0.1% sodium azide and 50% glycerol pH 7.3.

## Storage

Store at -20°C. DO NOT ALIQUOT

## Clonality

Polyclonal

## Ig Type

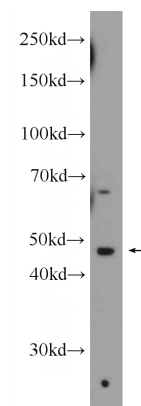
Rabbit IgG

## Applications

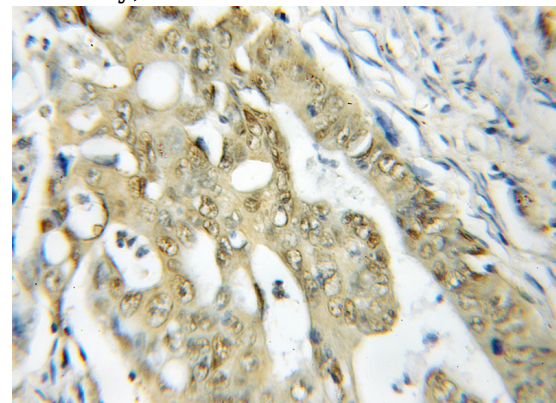
ELISA, IHC, WB, IF, IP

## Dilutions

## Validations



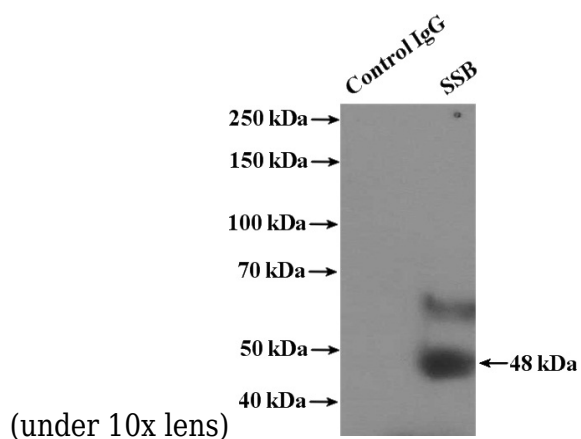
Jurkat cells were subjected to SDS PAGE followed by western blot with Catalog No:115605(SSB Antibody) at dilution of 1:300



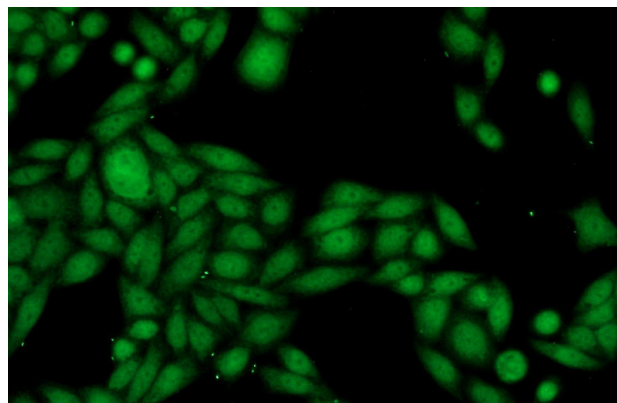
Immunohistochemical of paraffin-embedded human colon cancer using Catalog No:115605(SSB antibody) at dilution of 1:50

# SSB antibody

Catalog Number: 115605



IP Result of anti-SSB (IP:Catalog No:115605, 4ug;  
Detection:Catalog No:115605 1:300) with Jurkat  
cells lysate 3600ug.



Immunofluorescent analysis of HeLa cells using  
Catalog No:115605(SSB Antibody) at dilution of  
1:50 and Alexa Fluor 488-conjugated AffiniPure  
Goat Anti-Rabbit IgG(H+L)