

General Information

Gene Name Synonym

AD56; Metalloprotease RGD disintegrin protein; Metalloproteinase-like, disintegrin-like, and cysteine-rich protein 15; Metargidin

Protein Construction

A DNA sequence encoding the mouse ADAM15 (O88839-1) extracellular domain (Met 1-Thr 697) was expressed, with a C-terminal polyhistidine tag.

Organism

Mouse

Expression Host

Human Cells

QC Testing

Activity

1. Measured by its ability to bind human PTK6 in a functional ELISA.
2. Measured by its ability to bind human SRC in a functional ELISA.
3. Measured by its ability to bind mouse SRC in a functional ELISA.
4. Measured by its ability to bind human LYN in a functional ELISA.

Purity

> 90 % as determined by SDS-PAGE

Endotoxin

< 1.0 EU per μg of the protein as determined by the LAL method

Stability

Samples are stable for up to twelve months from date of receipt at -70°C

Predicted N terminal

Arg 18 & Asp 208

Molecular Mass

The secreted recombinant mouse ADAM15 (pro form) comprises 691 amino acids and has a calculated molecular mass of 74.6 kDa. As a result of glycosylation, the apparent molecular mass of the recombinant protein is approximately 80-90 kDa in SDS-PAGE under reducing conditions.

Formulation

Lyophilized from sterile PBS, pH 7.4

1. 5 % trehalose and mannitol are added as protectants before lyophilization.
2. Please contact us for any concerns or special requirements.

Usage Guide

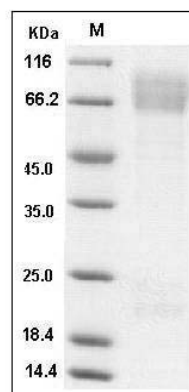
Storage

Store it under sterile conditions at -20°C to -80°C . It is recommended that the protein be aliquoted for optimal storage. Avoid repeated freeze-thaw cycles.

Reconstitution

Adding sterile water, prepare a stock solution of 0.25 mg/ml. Concentration is measured by UV-Vis.

SDS-PAGE



Mouse ADAM15 (His Tag) recombinant protein



Catalog Number: 502605

Mouse ADAM15 / MDC15 Protein (His Tag) SDS- PAGE