

PRMT1 antibody

Catalog Number: 114205

Product name

PRMT1 antibody

WB: 1:200-1:2000

IHC: 1:20-1:200

Specificity

Human, Mouse, Rat; other species not tested.

IF: 1:20-1:200

Antibody description

PRMT1 Rabbit Polyclonal antibody. Positive WB detected in A549 cells, human heart tissue, human kidney tissue, Transfected HEK-293 cells. Positive IHC detected in human lymphoma tissue. Positive IF detected in A549 cells. Positive FC detected in Raji cells. Observed molecular weight by Western-blot: 40-42 kDa

Preparation

This antibody was obtained by immunization of PRMT1 recombinant protein (Accession Number: NM_198318). Purification method: Antigen affinity purified.

Formulation

PBS with 0.1% sodium azide and 50% glycerol pH 7.3.

Storage

Store at -20°C. DO NOT ALIQUOT

Clonality

Polyclonal

Ig Type

Rabbit IgG

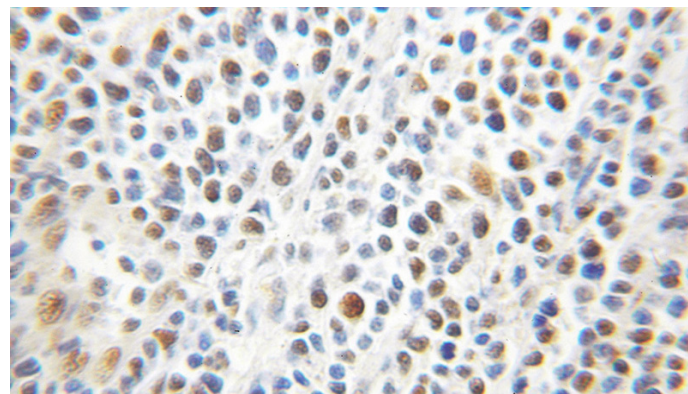
Applications

ELISA, IHC, WB, FC, IF

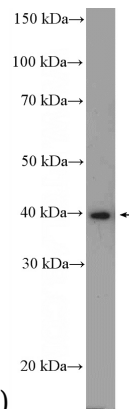
Dilutions

Recommended Dilution:

Validations

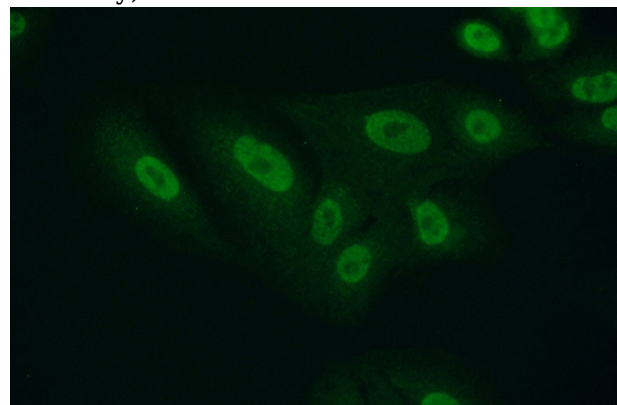


Immunohistochemical of paraffin-embedded human lymphoma using Catalog No:114205(PRMT1 antibody) at dilution of 1:100



(under 10x lens)

A549 cells were subjected to SDS PAGE followed by western blot with Catalog No:114205(PRMT1 Antibody) at dilution of 1:600



PRMT1 antibody



Catalog Number: 114205

Immunofluorescent analysis of (10% Formaldehyde) fixed A549 cells using Catalog No:114205(PRMT1 Antibody) at dilution of 1:50 and Alexa Fluor 488-conjugated AffiniPure Goat Anti-Rabbit IgG(H+L)

1X10⁶ Raji cells were stained with 0.2ug PRMT1 antibody (Catalog No:114205, red) and control antibody (blue). Fixed with 4% PFA blocked with 3% BSA (30 min). Alexa Fluor 488-conjugated AffiniPure Goat Anti-Rabbit IgG(H+L) with dilution 1:1500.

