

## General Information

### Gene Name Synonym

B-CAM cell surface glycoprotein; Lutheran antigen

### Protein Construction

A DNA sequence encoding the rat BCAM (Q9ESS6) (Met1-Ala543) was expressed, fused with a polyhistidine tag at the C-terminus.

### Organism

Rat

### Expression Host

Human Cells

## QC Testing

### Activity

Measured by the ability of the immobilized protein to support the adhesion of HOS human osteogenic sarcoma cells.

When cells are added to coated plates(10 µg/mL,100µL/well), approximately 20-50% will adhere for 1 hour incubation at 37°C.

### Purity

> 90 % as determined by SDS-PAGE

### Endotoxin

< 1.0 EU per µg of the protein as determined by the LAL method

### Stability

Samples are stable for up to twelve months from date of receipt at -70°C

### Predicted N terminal

Glu 26

### Molecular Mass

The recombinant rat BCAM comprises 529 amino acids and predicts a molecular mass of 58.2 kDa. The apparent molecular mass of the recombinant protein is approximately 68 kDa in SDS-PAGE under reducing conditions due to glycosylation.

### Formulation

Lyophilized from sterile PBS, pH 7.4

1. 5 % trehalose and mannitol are added as protectants before lyophilization.

2. Please contact us for any concerns or special requirements.

## Usage Guide

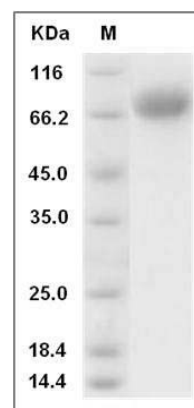
### Storage

Store it under sterile conditions at -20°C to -80°C. It is recommended that the protein be aliquoted for optimal storage. Avoid repeated freeze-thaw cycles.

### Reconstitution

Adding sterile water, prepare a stock solution of 0.25 mg/ml. Concentration is measured by UV-Vis.

### SDS-PAGE



Rat BCAM Protein (His Tag) SDS-PAGE