

COX6A1 Polyclonal Antibody



Catalog Number: 164205

Product name

COX6A1 Polyclonal Antibody

Specificity

Human, Mouse, Rat

Antibody description

Polyclonal antibody to COX6A1

Preparation

Antigen: Recombinant fusion protein containing a sequence corresponding to amino acids 25-109 of human COX6A1 (NP_004364.2).

Formulation

PBS with 0.02% sodium azide, 50% glycerol, pH7.3.

Storage

Store at -20°C. Avoid freeze / thaw cycles.

Clonality

Polyclonal

Ig Type

Rabbit IgG

Applications

WB, IHC, IF

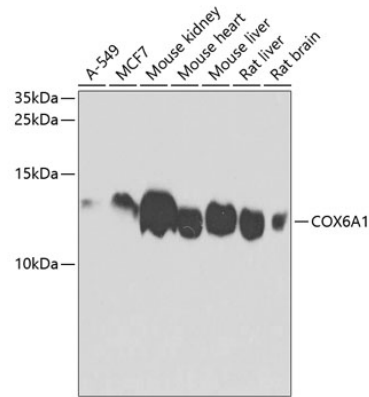
Dilutions

WB 1:200 - 1:2000

IHC 1:20 - 1:200

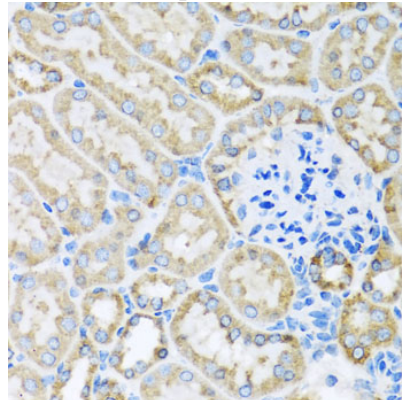
IF 1:50 - 1:200

Validations



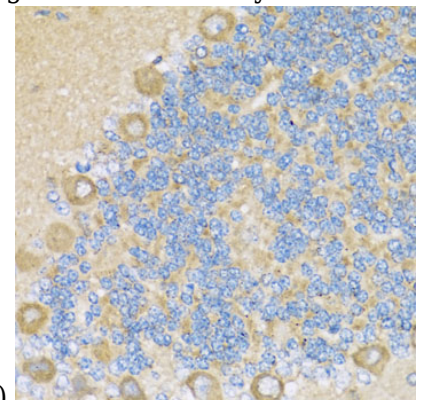
Western blot - COX6A1 Polyclonal Antibody

Western blot analysis of extracts of various cell lines, using COX6A1 antibody at 1:1000 dilution. Secondary antibody: HRP Goat Anti-Rabbit IgG (H+L) at 1:10000 dilution. Lysates/proteins: 25ug per lane. Blocking buffer: 3% nonfat dry milk in TBST. Detection: ECL Basic Kit. Exposure time: 60s.



Immunohistochemistry - COX6A1 Polyclonal Antibody

Immunohistochemistry of paraffin-embedded mouse kidney using COX6A1 antibody at dilution



of 1:100 (40x lens).

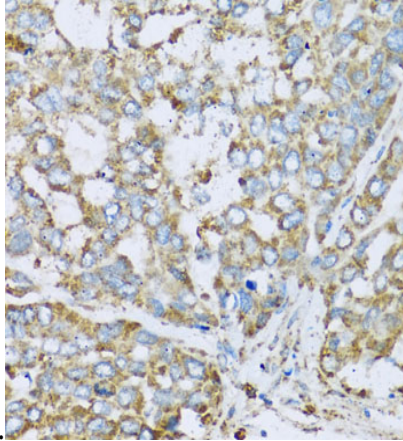
COX6A1 Polyclonal Antibody



Catalog Number: 164205

Immunohistochemistry - COX6A1 Polyclonal Antibody

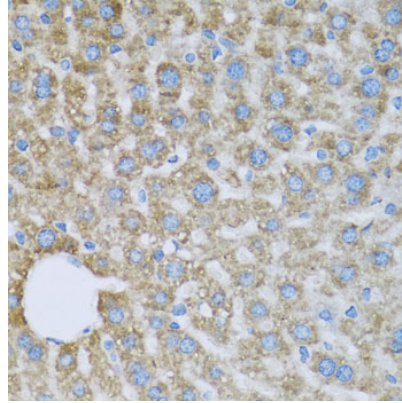
Immunohistochemistry of paraffin-embedded rat cerebellum using COX6A1 antibody at dilution of



1:100 (40x lens).

Immunohistochemistry - COX6A1 Polyclonal Antibody

Immunohistochemistry of paraffin-embedded human liver cancer using COX6A1 antibody at dilution of 1:100 (40x lens).



Immunohistochemistry - COX6A1 Polyclonal Antibody

Immunohistochemistry of paraffin-embedded mouse liver using COX6A1 antibody at dilution of 1:100 (40x lens).