

Mouse PD-L1/B7-H1/CD274 (His & Fc Tag) recombinant protein



Catalog Number: 503205

General Information

Gene Name Synonym

PD-L1

Protein Construction

A DNA sequence encoding the extracellular domain (Met 1-Thr 238) of mouse PD-L1 (NP_068693.1) was fused with the C-terminal His-tagged Fc region of human IgG1 at the C-terminus.

Organism

Mouse

Expression Host

Human Cells

QC Testing

Activity

Measured by its binding ability in a functional ELISA. Immobilized recombinant mouse PD-1 at 10 µg/ml (100 µl/well) can bind biotinylated mouse PD-L1 with a linear range of 3.2-400 ng/ml.

Purity

> 97 % as determined by SDS-PAGE

Endotoxin

< 1.0 EU per µg of the protein as determined by the LAL method

Stability

Samples are stable for up to twelve months from date of receipt at -70°C

Predicted N terminal

Phe 19

Molecular Mass

The recombinant mouse PD-L1/Fc is a disulfide-linked homodimeric protein after proteolytic removal of the signal peptide. The reduced monomer consists of 468 amino acids and predicts a molecular mass of 52.8 kDa. As a result of glycosylation, the apparent molecular mass of rm PD-L1/Fc monomer is approximately 65-75 kDa in SDS-PAGE under reducing conditions.

Formulation

Lyophilized from sterile PBS, pH 7.4

1. 5 % trehalose and mannitol are added as protectants before lyophilization.

2. Please contact us for any concerns or special requirements.

Usage Guide

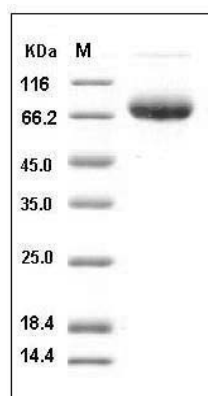
Storage

Store it under sterile conditions at -20°C to -80°C. It is recommended that the protein be aliquoted for optimal storage. Avoid repeated freeze-thaw cycles.

Reconstitution

Adding sterile water, prepare a stock solution of 0.25 mg/ml. Concentration is measured by UV-Vis.

SDS-PAGE



Mouse PD-L1 / B7-H1 / CD274 Protein (His & Fc Tag) SDS-PAGE