

Anti-S100 alpha 6/PRA Rabbit antibody



Catalog Number: 167905

Product name

Rabbit IgG

Anti-S100 alpha 6/PRA Rabbit antibody

Applications

Specificity

WB, ICC/IF, FC, IP

Human, Mouse, Rat

Dilutions

Antibody description

WB: 1/1000

S100 alpha 6/PRA Rabbit monoclonal antibody

ICC/IF: 1/50

Preparation

FC: 1/20-1/100

Antigen: Recombinant protein of human S100 alpha 6/PRA

IP: 1/20

Formulation

Validations

50nM Tris-Glycine(pH 7.4), 0.15M NaCl, 40%Glycerol, 0.01% sodium azide and 0.05% BSA

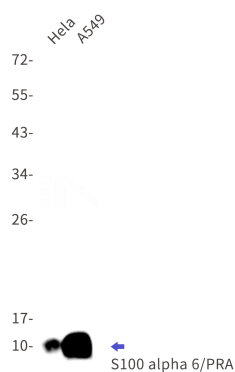
Storage

Store at 4°C short term. Store at -20°C long term. Avoid freeze / thaw cycle.

Clonality

Monoclonal

Ig Type



Western blot detection of S100 alpha 6/PRA in HeLa,A549 cell lysates using S100 alpha 6/PRA Rabbit mAb(1:1000 diluted).Predicted band size:10kDa.Observed band size:10kDa.