

General Information

Protein Construction

A DNA sequence encoding the mature form of human BMP2 (NP_001191.1) (Gln283-Arg396) was expressed. The mature form sequences of human, mouse, rat, rhesus and canine BMP2 are identical.

Organism

Human

Expression Host

E. coli

QC Testing

Activity

Measured by its ability to induce alkaline phosphatase production by MC3T3-E1 mouse osteoblastic cells. The ED₅₀ for this effect is typically 0.5-2 µg/ml.

Purity

> 95 % as determined by SDS-PAGE

Endotoxin

Please contact us for more information.

Stability

Samples are stable for up to twelve months from date of receipt at -70°C

Predicted N terminal

Met

Molecular Mass

The recombinant human BMP2 monomer consists of 115 amino acids and has a predicted molecular mass of 13 kDa.

Formulation

Lyophilized from sterile 30 % CAN, 0.1 % TFA, pH 2.9.

1. 5 % trehalose and mannitol are added as protectants before lyophilization.

2. Please contact us for any concerns or special requirements.

Usage Guide

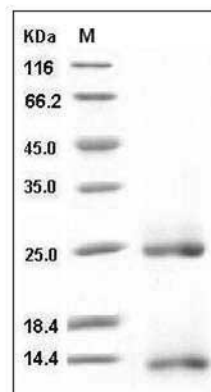
Storage

Store it under sterile conditions at -20°C to -80°C. It is recommended that the protein be aliquoted for optimal storage. Avoid repeated freeze-thaw cycles.

Reconstitution

Adding sterile water, prepare a stock solution of 0.25 mg/ml. Concentration is measured by UV-Vis.

SDS-PAGE



Human BMP-2 / BMP2A Protein SDS-PAGE