

MVD antibody

Catalog Number: 112905

Product name

MVD antibody

IHC: 1:20-1:200

IF: 1:50-1:500

Specificity

Human, Mouse, Rat; other species not tested.

Antibody description

MVD Rabbit Polyclonal antibody. Positive IHC detected in human lung cancer tissue, human heart tissue. Positive IF detected in A431 cells. Positive WB detected in A431 cells. Observed molecular weight by Western-blot: 66-74 kDa

Preparation

This antibody was obtained by immunization of MVD recombinant protein (Accession Number: NM_002461). Purification method: Antigen affinity purified.

Formulation

PBS with 0.02% sodium azide and 50% glycerol pH 7.3.

Storage

Store at -20°C. DO NOT ALIQUOT

Clonality

Polyclonal

Ig Type

Rabbit IgG

Applications

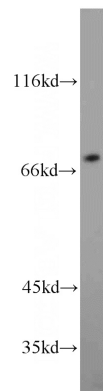
ELISA, WB, IHC, IF

Dilutions

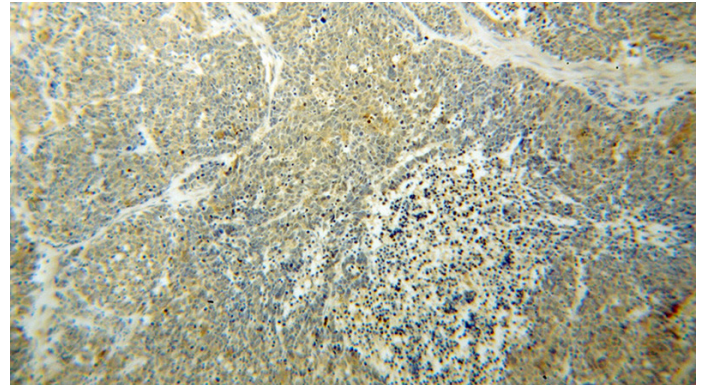
Recommended Dilution:

WB: 1:200-1:2000

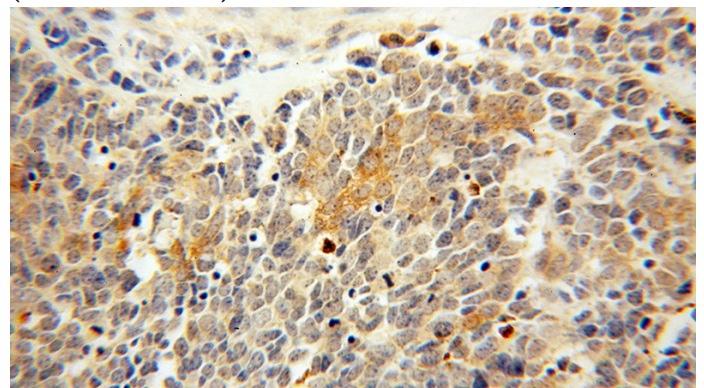
Validations



A431 cells were subjected to SDS PAGE followed by western blot with Catalog No:112905(MVD antibody) at dilution of 1:800



Immunohistochemical of paraffin-embedded human lung cancer using Catalog No:112905(MVD antibody) at dilution of 1:50 (under 10x lens)

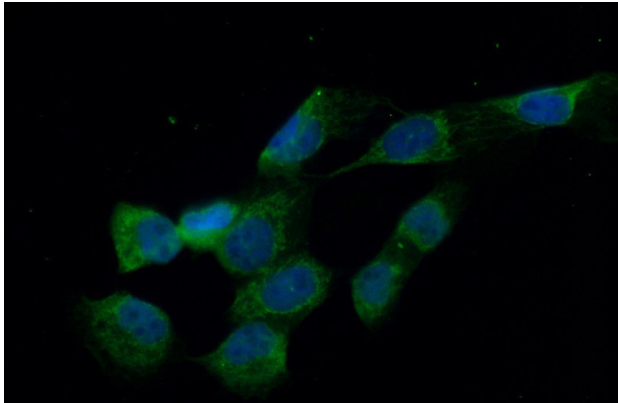


Immunohistochemical of paraffin-embedded

MVD antibody

Catalog Number: 112905

human lung cancer using Catalog
No:112905(MVD antibody) at dilution of 1:50
(under 40x lens)



Immunofluorescent analysis of (10%
Formaldehyde) fixed A431 cells using Catalog
No:112905(MVD Antibody) at dilution of 1:50 and
Alexa Fluor 488-conjugated AffiniPure Goat Anti-
Rabbit IgG(H+L)