

RENALASE antibody



Catalog Number: 107505

Product name

RENALASE antibody

Recommended Dilution:

WB: 1:1000-1:10000

Immunogen

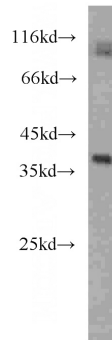
IHC: 1:20-1:200

[Human RENALASE Recombinant protein \(His tag\)](#)

Validations

Specificity

Human; other species not tested.



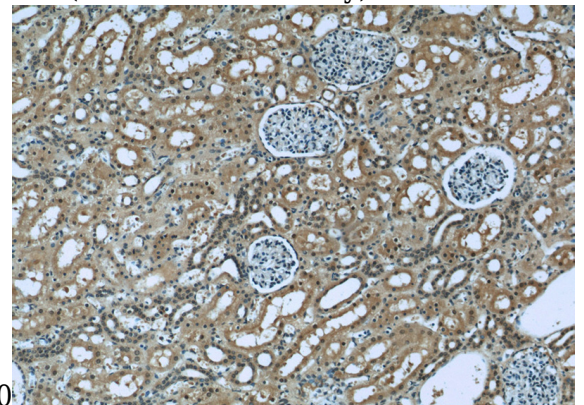
Antibody description

RENALASE Mouse Monoclonal antibody. Positive IHC detected in human kidney tissue, human skeletal muscle tissue. Positive WB detected in Human heart, human heart tissue. Observed molecular weight by Western-blot: 38 kDa

human heart tissue were subjected to SDS PAGE followed by western blot with Catalog No:107505(RENALASE antibody) at dilution of

Preparation

This antibody was obtained by immunization of RENALASE recombinant protein (Accession Number: NM_001031709). Purification method: Protein G purified.



1:2000

Formulation

PBS with 0.1% sodium azide and 50% glycerol pH 7.3.

Immunohistochemistry of paraffin-embedded human kidney slide using Catalog No:107505(RENALASE Antibody) at dilution of 1:50

Storage

Store at -20°C. DO NOT ALIQUOT

Clonality

Monoclonal

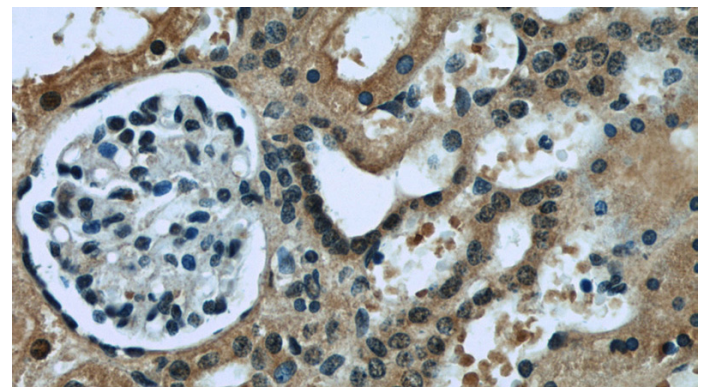
Ig Type

Mouse IgG1

Applications

ELISA, WB, IHC

Dilutions



RENALASE antibody



Catalog Number: 107505

Immunohistochemistry of paraffin-embedded human kidney slide using Catalog

No:107505(RENALASE Antibody) at dilution of 1:50