

EEF2K Polyclonal Antibody



Catalog Number: 164505

Product name

EEF2K Polyclonal Antibody

Specificity

Human, Mouse

Antibody description

Polyclonal antibody to EEF2K

Preparation

Antigen: Recombinant fusion protein containing a sequence corresponding to amino acids 406-725 of human EEF2K (NP_037434.1).

Formulation

PBS with 0.02% sodium azide, 50% glycerol, pH7.3.

Storage

Store at -20°C. Avoid freeze / thaw cycles.

Clonality

Polyclonal

Ig Type

Rabbit IgG

Applications

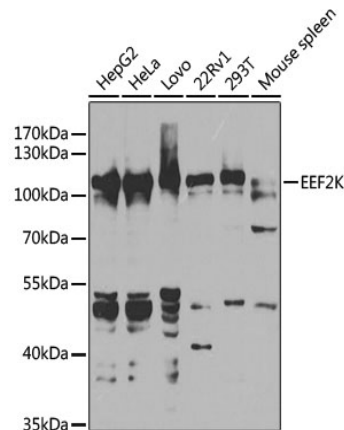
WB, IF

Dilutions

WB 1:500 - 1:2000

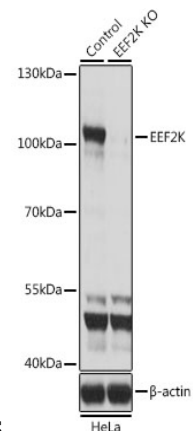
IF 1:50 - 1:200

Validations



Western blot - EEF2K Polyclonal Antibody

Western blot analysis of extracts of various cell lines, using EEF2K antibody at 1:1000 dilution. Secondary antibody: HRP Goat Anti-Rabbit IgG (H+L) at 1:10000 dilution. Lysates/proteins: 25ug per lane. Blocking buffer: 3% nonfat dry milk in TBST. Detection: ECL



Basic Kit .Exposure time: 40s.

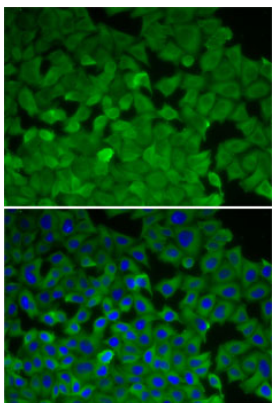
Western blot - EEF2K Polyclonal Antibody

Western blot analysis of extracts from normal (control) and EEF2K knockout HeLa cells, using EEF2K antibody at 1:1000 dilution. Secondary antibody: HRP Goat Anti-Rabbit IgG (H+L) at 1:10000 dilution. Lysates/proteins: 25ug per lane. Blocking buffer: 3% nonfat dry milk in TBST. Detection: ECL Basic Kit .Exposure time: 1s.

EEF2K Polyclonal Antibody



Catalog Number: 164505



Immunofluorescence - EEF2K Polyclonal Antibody

Immunofluorescence analysis of A-549 cells using EEF2K antibody . Blue: DAPI for nuclear staining.