

General Information

Gene Name Synonym

Interleukin-6 receptor subunit alpha

Protein Construction

A DNA sequence encoding the rat Il6r (NP_058716.2) (Met1-Pro364) was expressed with a polyhistidine tag at the C-terminus.

Organism

Rat

Expression Host

Human Cells

QC Testing

Purity

> 90 % as determined by SDS-PAGE.

Endotoxin

<1.0 EU per μg protein as determined by the LAL method.

Stability

Samples are stable for up to twelve months from date of receipt at -70°C

Predicted N terminal

Leu 20

Molecular Mass

The recombinant rat Il6r consists 356 amino acids and predicts a molecular mass of 39.5 kDa.

Formulation

Lyophilized from sterile PBS, pH 7.4.

1. 5 % trehalose and mannitol are added as protectants before lyophilization.

2. Please contact us for any concerns or special requirements.

Usage Guide

Storage

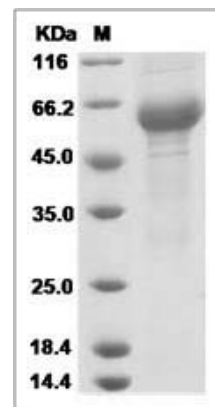
Store it under sterile conditions at -20°C to -80°C .

It is recommended that the protein be aliquoted for optimal storage. Avoid repeated freeze-thaw cycles.

Reconstitution

Adding sterile water, prepare a stock solution of 0.25 mg/ml. Concentration is measured by UV-Vis.

SDS-PAGE



Il6r protein SDS-PAGE