

CDC42 antibody



Catalog Number: 109105

Product name

CDC42 antibody

WB: 1:200-1:1000

IHC: 1:20-1:200

Specificity

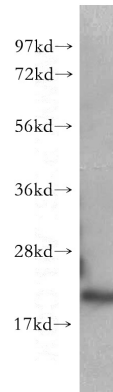
Human, Mouse, Rat; other species not tested.

IF: 1:20-1:200

Antibody description

CDC42 Rabbit Polyclonal antibody. Positive IHC detected in human pancreas cancer tissue, human gliomas tissue, human pancreas tissue, human skeletal muscle tissue. Positive IF detected in C6 cells, HeLa cells. Positive WB detected in mouse brain tissue. Observed molecular weight by Western-blot: 21 kDa

Validations



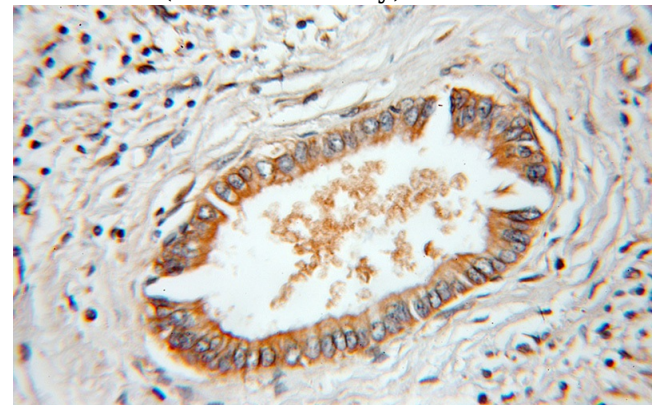
Preparation

This antibody was obtained by immunization of CDC42 recombinant protein (Accession Number: NM_001791). Purification method: Antigen affinity purified.

mouse brain tissue were subjected to SDS PAGE followed by western blot with Catalog No:109105(CDC42 antibody) at dilution of 1:400

Formulation

PBS with 0.1% sodium azide and 50% glycerol pH 7.3.



Storage

Store at -20°C. DO NOT ALIQUOT

Clonality

Polyclonal

Immunohistochemical of paraffin-embedded human pancreas cancer using Catalog No:109105(CDC42 antibody) at dilution of 1:50 (under 25x lens)

Ig Type

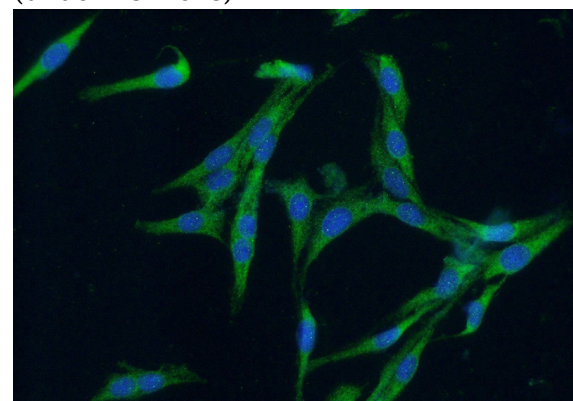
Rabbit IgG

Applications

ELISA, WB, IHC, IF

Dilutions

Recommended Dilution:



CDC42 antibody



Catalog Number: 109105

Immunofluorescent analysis of (-20oc Ethanol)
fixed C6 cells using Catalog No:109105(CDC42

Antibody) at dilution of 1:50 and Alexa Fluor 488-
conjugated AffiniPure Goat Anti-Rabbit IgG(H+L)