

SEMA4B antibody



Catalog Number: 115105

Product name

SEMA4B antibody

IP: 1:200-1:1000

IF: 1:10-1:100

Specificity

Human, Mouse, Rat; other species not tested.

Antibody description

SEMA4B Rabbit Polyclonal antibody. Positive IF detected in HepG2 cells. Positive WB detected in mouse lymph tissue, mouse pancreas tissue. Positive IP detected in PC-3 cells. Observed molecular weight by Western-blot: 92 kDa

Preparation

This antibody was obtained by immunization of SEMA4B recombinant protein (Accession Number: BC010701). Purification method: Antigen affinity purified.

Formulation

PBS with 0.02% sodium azide and 50% glycerol pH 7.3.

Storage

Store at -20°C. DO NOT ALIQUOT

Clonality

Polyclonal

Ig Type

Rabbit IgG

Applications

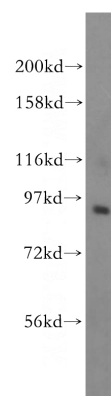
ELISA, WB, IF, IP

Dilutions

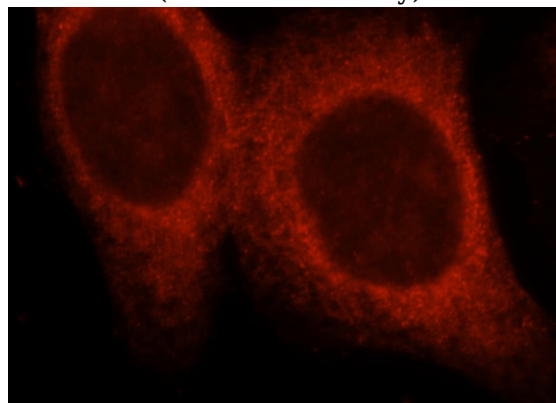
Recommended Dilution:

WB: 1:500-1:5000

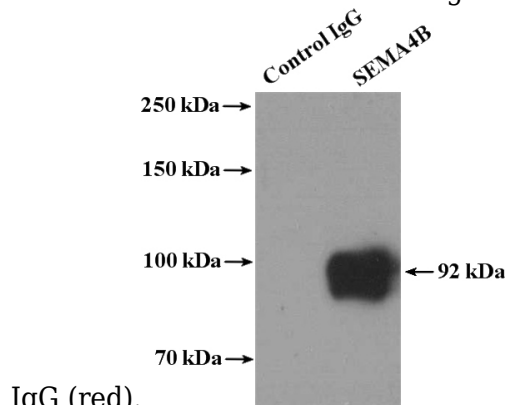
Validations



mouse lymph tissue were subjected to SDS PAGE followed by western blot with Catalog No:115105(SEMA4B antibody) at dilution of 1:400



Immunofluorescent analysis of HepG2 cells, using SEMA4B antibody Catalog No:115105 at 1:25 dilution and Rhodamine-labeled goat anti-rabbit



IgG (red).

IP Result of anti-SEMA4B (IP:Catalog No:115105,

SEMA4B antibody



Catalog Number: 115105

4ug; Detection:Catalog No:115105 1:300) with PC-3 cells lysate 4000ug.