

# PPP2R5A antibody

Catalog Number: 114105

## Product name

PPP2R5A antibody

WB: 1:1000-1:10000

IP: 1:200-1:2000

## Specificity

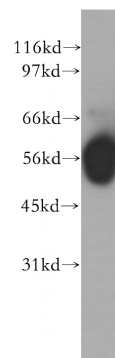
Human, Mouse, Rat; other species not tested.

IHC: 1:20-1:200

## Antibody description

PPP2R5A Rabbit Polyclonal antibody. Positive WB detected in human ileum tissue, human brain tissue, human heart tissue, human kidney tissue, human lung tissue. Positive IP detected in mouse brain tissue. Positive IHC detected in human pancreas cancer tissue. Observed molecular weight by Western-blot: 56 kDa

## Validations



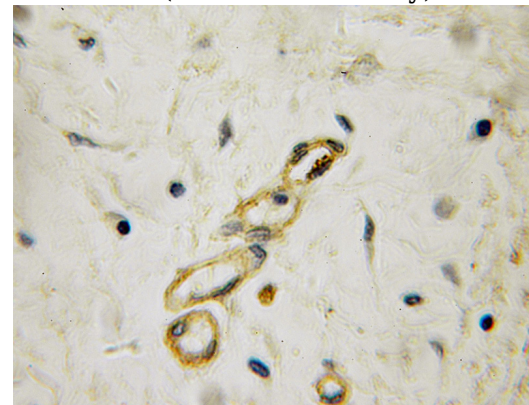
## Preparation

This antibody was obtained by immunization of PPP2R5A recombinant protein (Accession Number: NM\_006243). Purification method: Antigen affinity purified.

human ileum tissue were subjected to SDS PAGE followed by western blot with Catalog No:114105(PPP2R5A antibody) at dilution of 1:400

## Formulation

PBS with 0.1% sodium azide and 50% glycerol pH 7.3.



## Storage

Store at -20°C. DO NOT ALIQUOT

Immunohistochemical of paraffin-embedded human pancreas cancer using Catalog No:114105(PPP2R5A antibody) at dilution of 1:50 (under 10x lens)

## Clonality

Polyclonal

## Ig Type

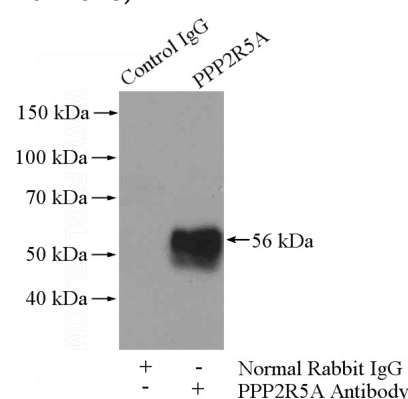
Rabbit IgG

## Applications

ELISA, WB, IHC, IP

## Dilutions

Recommended Dilution:



# PPP2R5A antibody



Catalog Number: 114105

---

IP Result of anti-PPP2R5A (IP:Catalog No:114105, 4ug; Detection:Catalog No:114105 1:500) with mouse brain tissue lysate 4000ug.