

Anti-SYN2 Rabbit antibody



Catalog Number: 167805

Product name

Anti-SYN2 Rabbit antibody

Specificity

Human, Mouse, Rat

Antibody description

SYN2 Rabbit monoclonal antibody

Preparation

Antigen: A synthetic peptide of human SYN2

Formulation

50nM Tris-Glycine(pH 7.4), 0.15M NaCl,
40%Glycerol, 0.01% sodium azide and 0.05% BSA

Storage

Store at 4°C short term. Store at -20°C long term.
Avoid freeze / thaw cycle.

Clonality

Monoclonal

Ig Type

Rabbit IgG

Applications

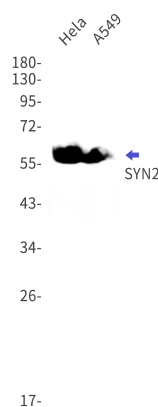
WB, IHC-P

Dilutions

WB: 1/5000

IHC: 1/50

Validations



Western blot detection of SYN2 in HeLa,A549 cell lysates using SYN2 Rabbit mAb(1:1000 diluted).Predicted band size:63kDa.Observed band size:63kDa.