

# RPGRIP1L antibody



Catalog Number: 114805

## Product name

RPGRIP1L antibody

IP: 1:200-1:2000

IHC: 1:20-1:200

## Specificity

Human; other species not tested.

## Antibody description

RPGRIP1L Rabbit Polyclonal antibody. Positive WB detected in HEK-293 cells, human kidney tissue. Positive IP detected in HEK-293 cells. Positive IHC detected in human pancreas tissue. Observed molecular weight by Western-blot: 151 kDa

## Preparation

This antibody was obtained by immunization of Peptide (Accession Number: NM\_015272). Purification method: Antigen affinity purified.

## Formulation

PBS with 0.1% sodium azide and 50% glycerol pH 7.3.

## Storage

Store at -20°C. DO NOT ALIQUOT

## Clonality

Polyclonal

## Ig Type

Rabbit IgG

## Applications

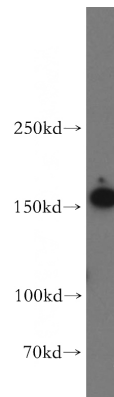
ELISA, WB, IHC, IP

## Dilutions

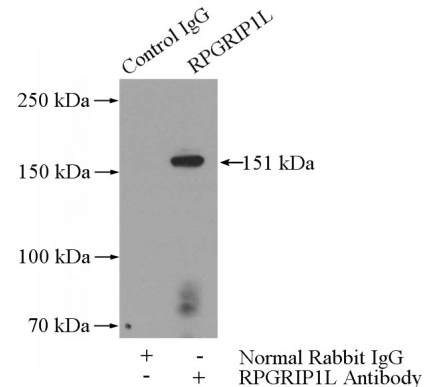
Recommended Dilution:

WB: 1:500-1:5000

## Validations

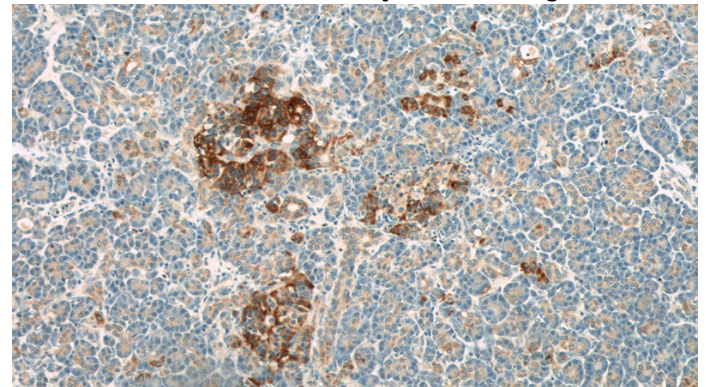


HEK-293 cells were subjected to SDS PAGE followed by western blot with Catalog No:114805(RPGRIP1L antibody) at dilution of



1:800

IP Result of anti-RPGRIP1L (IP:Catalog No:114805, 4ug; Detection:Catalog No:114805 1:700) with HEK-293 cells lysate 3200ug.



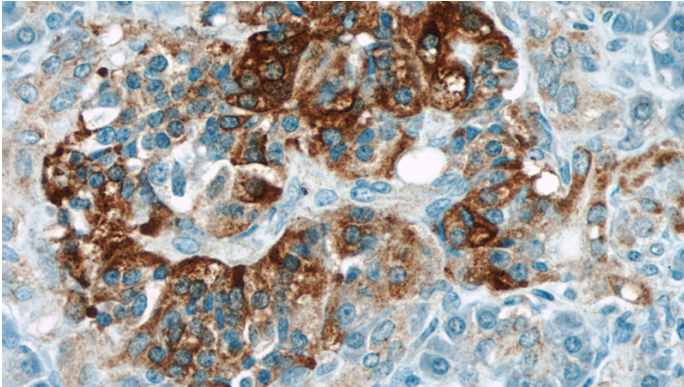
Immunohistochemical of paraffin-embedded human pancreas using Catalog

# RPGRIP1L antibody

Catalog Number: 114805

---

No:114805(RPGRIP1L antibody) at dilution of 1:50  
(under 10x lens)



Immunohistochemical of paraffin-embedded  
human pancreas using Catalog  
No:114805(RPGRIP1L antibody) at dilution of 1:50  
(under 40x lens)