

# Human EPHX2 (His Tag) recombinant protein



Catalog Number: 502805

## General Information

### Gene Name Synonym

Cytosolic epoxide hydrolase 2; Epoxide hydratase; Soluble epoxide hydrolase; Lipid-phosphate phosphatase

### Protein Construction

A DNA sequence encoding the human EPHX2 (NP\_001970.2) (Met1-Met555) was expressed with a polyhistidine tag at the N-terminus.

### Organism

Human

### Expression Host

Baculovirus-Insect Cells

## QC Testing

### Purity

> 90 % as determined by SDS-PAGE.

### Endotoxin

< 1.0 EU per  $\mu\text{g}$  protein as determined by the LAL method.

### Stability

Samples are stable for up to twelve months from date of receipt at  $-70^{\circ}\text{C}$

### Predicted N terminal

His

### Molecular Mass

The recombinant human EPHX2 consists 574 amino acids and predicts a molecular mass of 65 kDa.

### Formulation

Lyophilized from sterile 20 mM Tris, 500 mM NaCl, 10 % glycerol, pH 7.4.

- 5 % trehalose and mannitol are added as protectants before lyophilization.
- Please contact us for any concerns or special requirements.

## Usage Guide

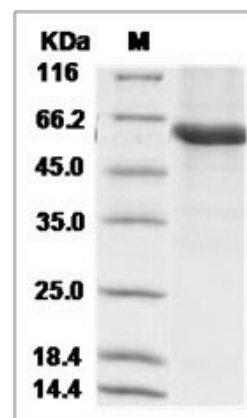
### Storage

Store it under sterile conditions at  $-20^{\circ}\text{C}$  to  $-80^{\circ}\text{C}$ . It is recommended that the protein be aliquoted for optimal storage. Avoid repeated freeze-thaw cycles.

### Reconstitution

Adding sterile water, prepare a stock solution of 0.25 mg/ml. Concentration is measured by UV-Vis.

### SDS-PAGE



Human EPHX2 / SHE Protein (His Tag)