

# Human ALDH1A1/ALDC/ALDH1/PUMB1 (His tag) recombinant protein



Catalog Number: 518405

## General Information

### Gene Name Synonym

Retinal Dehydrogenase 1, RALDH 1, RalDH1, ALDH-E1, ALHDII, Aldehyde Dehydrogenase Family 1 Member A1, Aldehyde Dehydrogenase Cytosolic, ALDH1A1, ALDC, ALDH1, PUMB1

### Protein Construction

A DNA sequence encoding the Human ALDH1A1/ALDC/ALDH1/PUMB1 Met1-Ser501 is expressed with a 6His tag at the N-terminus.

### Organism

Human

### Expression Host

E. coli

## QC Testing

### Purity

>95% as determined by SDS-PAGE.

### Endotoxin

<1.0 EU per  $\mu\text{g}$  protein as determined by the LAL

method.

### Stability

Store for up to 6 months at  $-20^{\circ}\text{C}$

### Formulation

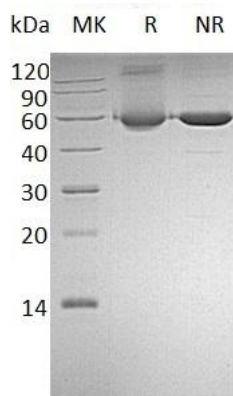
Supplied as a  $0.2\ \mu\text{m}$  filtered solution of 20mM TrisHCl pH8.5.

## Usage Guide

### Storage

Store at  $<-20^{\circ}\text{C}$ , minimize freeze-thaw cycles.

### SDS-PAGE



Human ALDH1A1/ALDC/ALDH1/PUMB1 (His tag)  
recombinant protein