

BAF170 antibody

Catalog Number: 108405

Product name

BAF170 antibody

IP: 1:200-1:2000

IHC: 1:20-1:200

Specificity

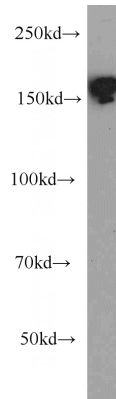
Human, Mouse, Rat; other species not tested.

IF: 1:10-1:100

Antibody description

BAF170 Rabbit Polyclonal antibody. Positive IF detected in HepG2 cells. Positive IHC detected in human medulloblastoma tissue. Positive IP detected in HeLa cells. Positive WB detected in HeLa cells, A431 cells. Observed molecular weight by Western-blot: 170 kDa

Validations



Preparation

This antibody was obtained by immunization of BAF170 recombinant protein (Accession Number: NM_139067). Purification method: Antigen affinity purified.

HeLa cells were subjected to SDS PAGE followed by western blot with Catalog No:108405(SMARCC2 antibody) at dilution of 1:500

Formulation

PBS with 0.1% sodium azide and 50% glycerol pH 7.3.

Storage

Store at -20°C. DO NOT ALIQUOT

Clonality

Polyclonal

Ig Type

Rabbit IgG

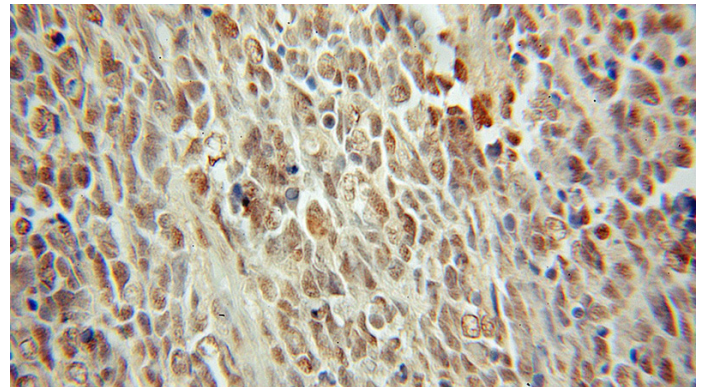
Applications

ELISA, WB, IHC, IF, IP

Dilutions

Recommended Dilution:

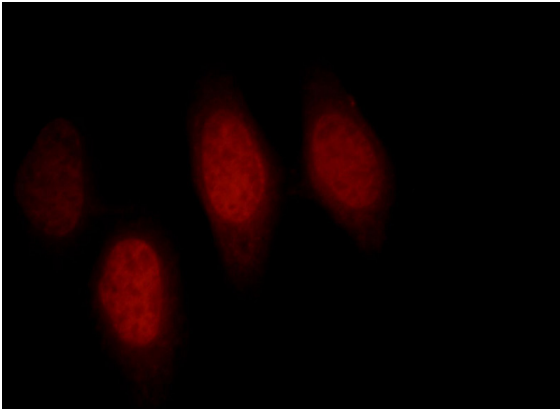
WB: 1:200-1:2000



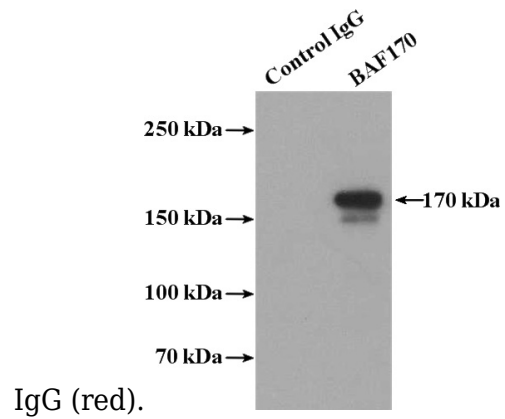
Immunohistochemical of paraffin-embedded human medulloblastoma using Catalog No:108405(SMARCC2 antibody) at dilution of 1:50 (under 10x lens)

BAF170 antibody

Catalog Number: 108405



Immunofluorescent analysis of HepG2 cells, using SMARCC2 antibody Catalog No:108405 at 1:25 dilution and Rhodamine-labeled goat anti-rabbit



IP Result of anti-BAF170 (IP:Catalog No:108405, 4ug; Detection:Catalog No:108405 1:700) with HeLa cells lysate 3200ug.