

TRPC1 antibody

Catalog Number: 116405

Product name

TRPC1 antibody

Specificity

Human, Mouse, Rat; other species not tested.

Antibody description

TRPC1 Rabbit Polyclonal antibody. Positive IF detected in PC-12 cells. Positive FC detected in PC-3 cells. Positive WB detected in PC-3 cells, human brain tissue, human testis tissue, mouse liver tissue, SH-SY5Y cells. Observed molecular weight by Western-blot: 90 kDa, 130 kDa

Preparation

This antibody was obtained by immunization of Peptide (Accession Number: NM_003304). Purification method: Antigen affinity purified.

Formulation

PBS with 0.02% sodium azide and 50% glycerol pH 7.3.

Storage

Store at -20°C. DO NOT ALIQUOT

Clonality

Polyclonal

Ig Type

Rabbit IgG

Applications

ELISA, WB, IF, FC

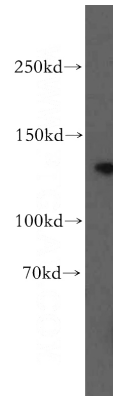
Dilutions

Recommended Dilution:

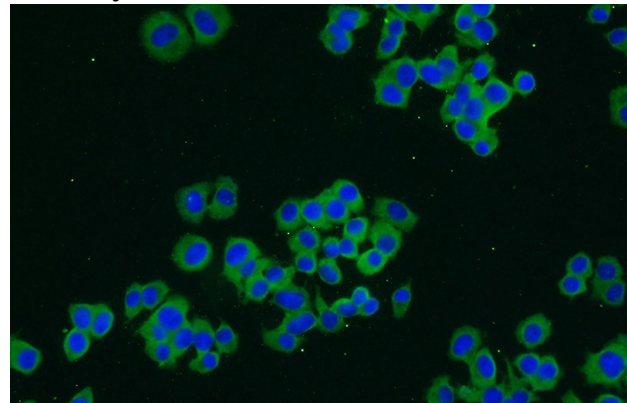
WB: 1:500-1:5000

IF: 1:10-1:100

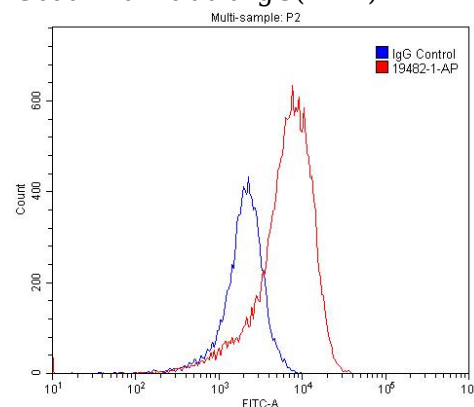
Validations



PC-3 cells were subjected to SDS PAGE followed by western blot with Catalog No:116405(TRPC1 antibody) at dilution of 1:500



Immunofluorescent analysis of PC-12 cells using Catalog No:116405(TRPC1 Antibody) at dilution of 1:25 and Alexa Fluor 488-conjugated AffiniPure Goat Anti-Rabbit IgG(H+L)



1X10⁶ PC-3 cells were stained with 0.2ug TRPC1 antibody (Catalog No:116405, red) and control

TRPC1 antibody



Catalog Number: 116405

antibody (blue). Fixed with 4% PFA blocked with 3% BSA (30 min). Alexa Fluor 488-conjugated

AffiniPure Goat Anti-Rabbit IgG(H+L) with dilution 1:1500.