

Anti-ZNF227 antibody

Catalog Number: 176405

Product name

Anti-ZNF227 antibody

Specificity

Human

Antibody description

Rabbit polyclonal antibody to ZNF227

Preparation

This antigen of this antibody was synthesized peptide derived from the internal region of human znf227.

Formulation

Liquid, Liquid in PBS containing 50% glycerol, 0.5% BSA and 0.02% sodium azide.

Storage

Store at +4°C after thawing. Aliquot store at -20°C or -80°C. Avoid repeated freeze / thaw cycles.

Clonality

Polyclonal

Ig Type

Rabbit IgG

Applications

WB, IHC-P

Dilutions

WB: 1:500-1:2000

IHC-P: 1:100-300

Validations

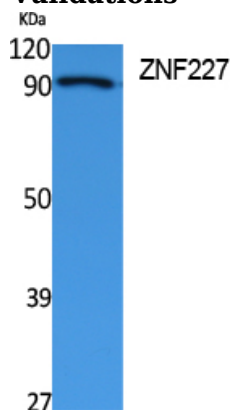


Fig1.; Western Blot analysis of extracts from Jurkat cells, using ZNF227 Polyclonal Antibody.. Secondary antibody (catalog#: HA1001) was diluted at 1:20000 cells nucleus extracted by Minute TM Cytoplasmic and Nuclear Fractionation kit (SC-003, Invent biotech, MN, USA).

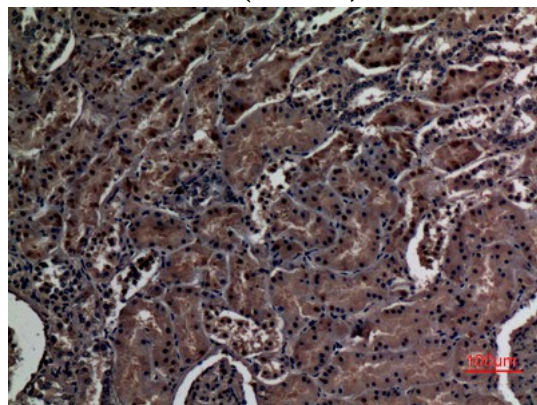


Fig2.; Immunohistochemical analysis of paraffin-embedded human-kidney, antibody was diluted at 1:100