

Anti-UCHL1 antibody



Catalog Number: 103405

Product name

Anti-UCHL1 antibody

Immunogen

[Mouse UCHL1 \(His Tag\) recombinant protein](#)

Specificity

Mouse UCHL1

Antibody description

Rabbit polyclonal to UCHL1

Preparation

Produced in rabbits immunized with purified, recombinant Mouse UCHL1 (rM UCHL1; Q9R0P9; Gln 2-Ala 223). UCHL1 specific IgG was purified by Mouse UCHL1 affinity chromatography.

Formulation

0.2 µm filtered solution in PBS with 5% trehalose

Storage

This antibody can be stored at 2°C-8°C for one month without detectable loss of activity. Antibody products are stable for twelve months from date of receipt when stored at -20°C to -80°C.

Preservative-Free.

Sodium azide is recommended to avoid contamination (final concentration 0.05%-0.1%). It is toxic to cells and should be disposed of properly. Avoid repeated freeze-thaw cycles.

Clonality

Polyclonal

Ig Type

Rabbit IgG

Applications

ELISA, WB, IP

Dilutions

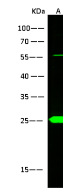
WB: 2-10 µg/mL

ELISA: 0.1-0.2 µg/mL

This antibody can be used at 0.1-0.2 µg/mL with the appropriate secondary reagents to detect Mouse UCHL1. The detection limit for Mouse UCHL1 is approximately 0.00975 ng/well.

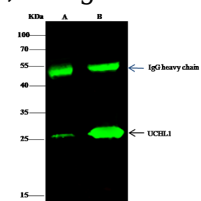
IP: 1-4 µg/mg of lysate

Validations



Lanes	A
Sample (whole cell lysate)	293T
Sample Volume (µg/lane)	30
Gel	13% SDS-PAGE reducing gel
Recommended Concentration	2-10 µg/ml
Secondary Antibody	Dylight 800-labeled Antibody to Rabbit IgG (H+L), at 1:5000 dilution.
Developed using Odyssey imaging system.	
Explanation	Predicted band size : 25 kDa Observed band size : 25 kDa Additional bands at : 55 kDa (We are unsure as to the identity of these extra bands. They are possible non-specific bindings).

UCHL1 Antibody, Rabbit PAb, Antigen Affinity



Lanes	A	B
Sample (whole cell lysate)	293T	U937.MG
Sample quantity	0.5 mg	
IP antibody quantity	2 µg	
Protein G agarose	15 µl of 50% Protein G Agarose	
Gel	13% SDS-PAGE reducing gel	
Primary antibody	anti-UCHL1 antibody at 5 µg/ml	
Secondary antibody	Dylight 800-labeled antibody to rabbit IgG (H+L), at 1:5000 dilution.	

Purified, Western blot

UCHL1 Antibody, Rabbit PAb, Antigen Affinity Purified