

Anti-Piwil2 antibody



Catalog Number: 142405

Product name

Anti-Piwil2 antibody

Specificity

Human Piwil2

Antibody description

Rabbit Polyclonal to Human Piwil2

Preparation

Produced in rabbits immunized with a synthetic peptide corresponding to the center region of the Human Piwil2, and purified by antigen affinity chromatography.

Formulation

0.2 µm filtered solution in PBS

Storage

This antibody can be stored at 2°C-8°C for one month without detectable loss of activity. Antibody products are stable for twelve months from date of receipt when stored at -20°C to -80°C.

Preservative-Free.

Sodium azide is recommended to avoid contamination (final concentration 0.05%-0.1%). It is toxic to cells and should be disposed of properly. Avoid repeated freeze-thaw cycles.

Clonality

Polyclonal

Ig Type

Rabbit IgG

Applications

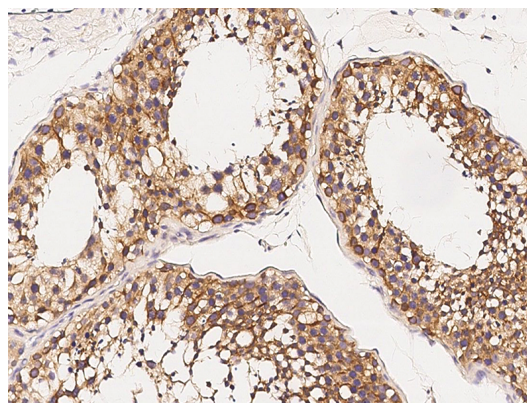
IHC-P, ICC/IF, IF

Dilutions

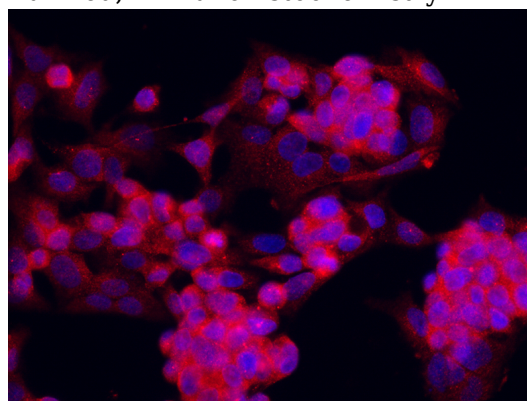
IHC-P: 0.5-5 µg/mL

ICC/IF: 0.5-3 µg/mL

Validations



Piwil2 Antibody, Rabbit PAb, Antigen Affinity Purified, Immunohistochemistry



Piwil2 Antibody, Rabbit PAb, Antigen Affinity Purified, Immunofluorescence