

# Anti-PD-L1/B7-H1/CD274 antibody



Catalog Number: 100405

## Product name

Anti-PD-L1/B7-H1/CD274 antibody

## Immunogen

[Human PD-L1/B7-H1/CD274 \(His Tag\) recombinant protein](#)

## Specificity

Human PD-L1 / B7-H1 / CD274

**No cross-reactivity** in ELISA with Human B7-1; Human B7-2; Mouse B7-H1; Non-blocking; This B7-H1/PD-L1 antibody can not block the binding of recombinant PD1 to its recombinant ligand B7-H1/PD-L1.

## Antibody description

Rabbit monoclonal to PD-L1/B7-H1/CD274

## Preparation

This antibody was obtained from a rabbit immunized with purified, recombinant Human PD-L1 / B7-H1 / CD274 (rh PD-L1 / B7-H1 / CD274; NP\_054862.1; Met 1-Thr 239).

## Formulation

0.2 µm filtered solution in PBS with 5% trehalose

## Storage

This antibody can be stored at 2°C-8°C for one month without detectable loss of activity. Antibody products are stable for twelve months from date of receipt when stored at -20°C to -70°C.

Preservative-Free.

Sodium azide is recommended to avoid contamination (final concentration 0.05%-0.1%). It is toxic to cells and should be disposed of properly. Avoid repeated freeze-thaw cycles.

## Clonality

Monoclonal

## Ig Type

Rabbit IgG

## Applications

ELISA, IHC-P

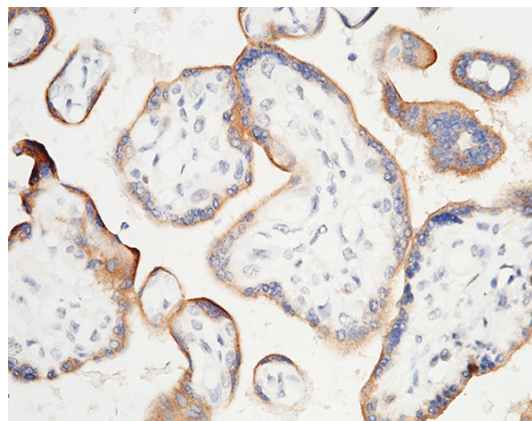
## Dilutions

ELISA: 0.1-0.2 µg/mL

This antibody can be used at 0.1-0.2 µg/mL with the appropriate secondary reagents to detect Human B7H1.

IHC-P: 5-15 µg/mL

## Validations



PD-L1 / B7-H1 / CD274 Antibody, Rabbit MAb, Immunohistochemistry

Immunochemical staining of human B7H1 in human placenta with rabbit monoclonal antibody (5 µg/mL, formalin-fixed paraffin embedded sections). Positive staining was localized to trophoblast.