

Anti-GFAP Rabbit antibody



Catalog Number: 169005

Product name

Rabbit IgG

Anti-GFAP Rabbit antibody

Applications

Specificity

WB, IHC-P, IP

Human, Mouse, Rat

Dilutions

Antibody description

1:2000

GFAP Rabbit monoclonal antibody

1:50

Preparation

1:20

Antigen: A synthetic peptide of human GFAP

Validations

Formulation

Supplied in 50nM Tris-Glycine(pH 7.4), 0.15M NaCl, 40%Glycerol, 0.01% sodium azide and 0.05% BSA.

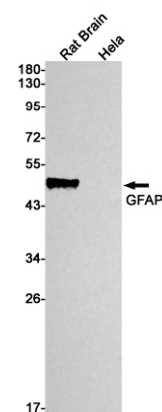
Storage

Store at 4°C short term. Aliquot and store at -20°C long term. Avoid freeze / thaw cycle.

Clonality

Monoclonal

Ig Type



Western blot detection of GFAP in Rat Brain, HeLa cell lysates using GFAP Rabbit mAb(1:1000 diluted). Predicted band size: 50kDa. Observed band size: 50kDa.